

TCCG

*Teleport Communications Group
7777 Leesburg Pike Suite 100N
Falls Church, VA 22043*

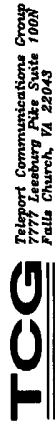
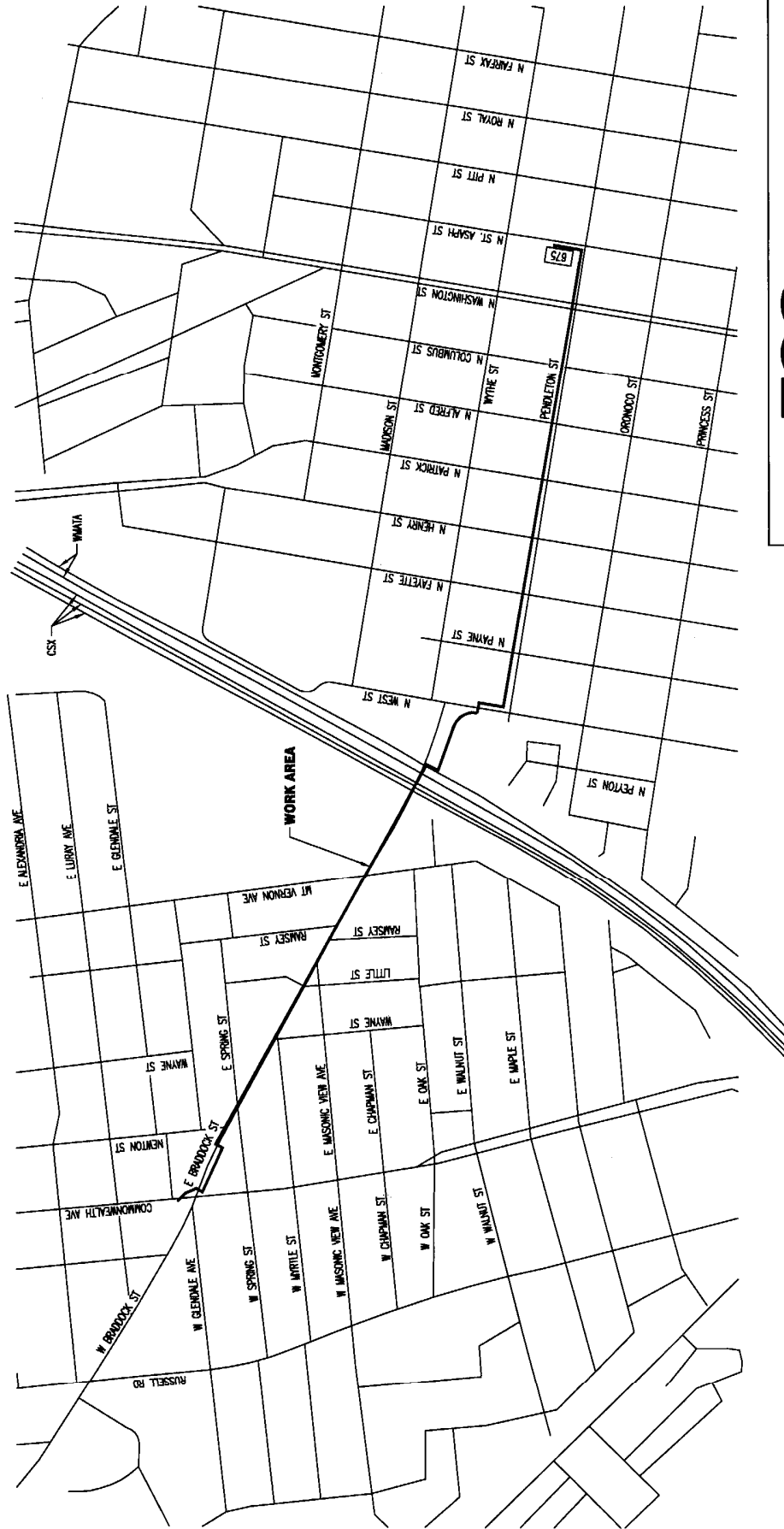
675 N WASHINGTON STREET
AS-BUILT FIBER ROUTE
ALEXANDRIA, VA

MAY 23, 2012

AS-BUILT

eXpress-tek
COMMUNICATIONS TECHNOLOGIES, INC.
1177 FREDERICKSBURG AVENUE, SUITE 203
FREDERICKSBURG, VA 22401
540.752.6891 (O) 540.752.6894 (F)

SITE MAP

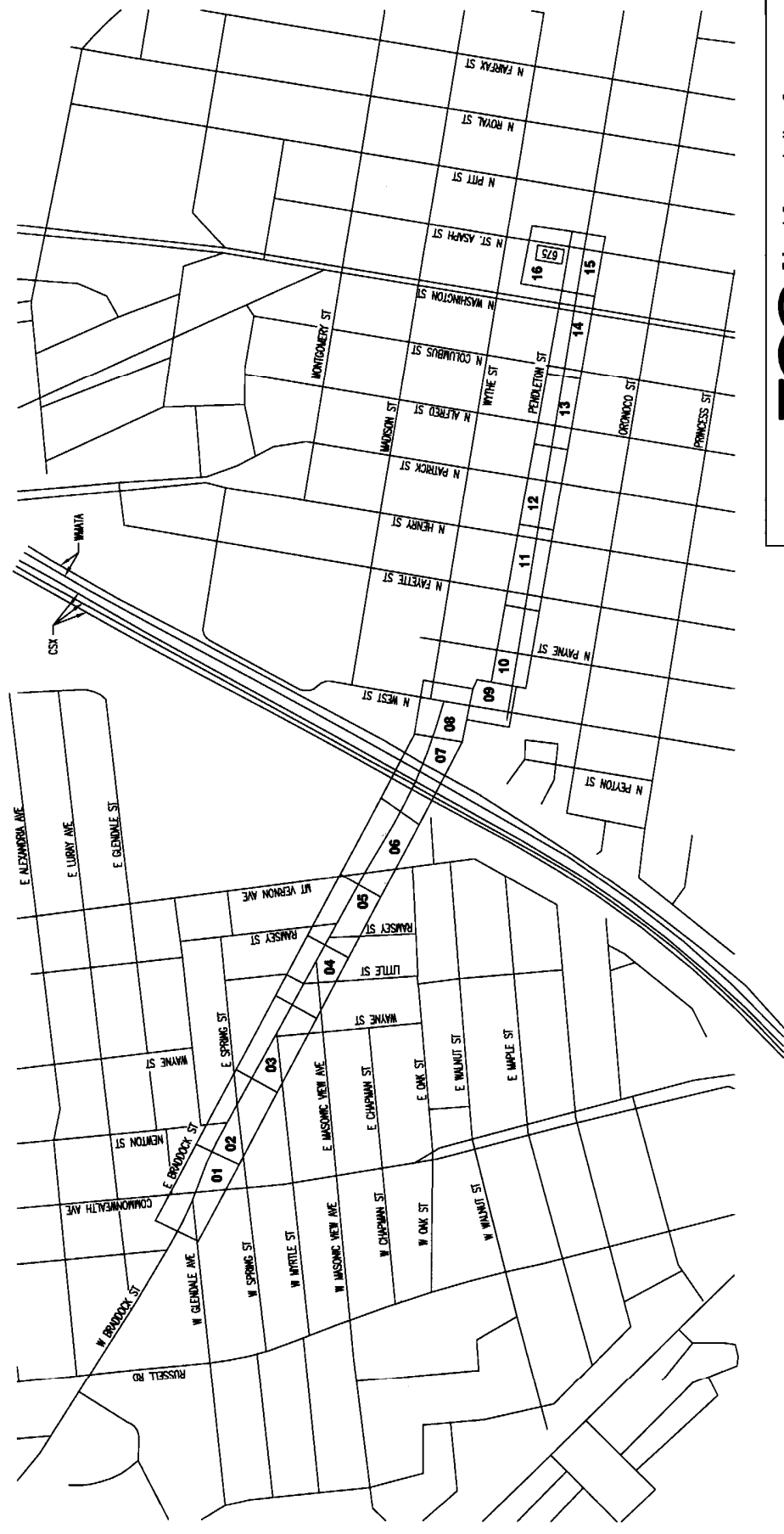


675 N WASHINGTON ST
AS-BUILT FIBER ROUTE
ALEXANDRIA, VA

NOT FOR OUTSIDE DISCLOSURE
WITHOUT EXPLICIT PERMISSION
FROM TCG.

FILE: 16055	ENGINEER: CHRIS LEWIS	DRAWN BY: J. BAER	DATE: 05/22/12
REV: 001	SCALE: N.T.S.	SHEET: 101 OF 103	

PAGE LAYOUT



TCG
Teleport Communications Group
7777 Leesburg Pike, Suite 100N
Falls Church, VA 22043

675 N WASHINGTON ST
AS-BUILT FIBER ROUTE
ALEXANDRIA, VA

NOT FOR OUTSIDE DISCLOSURE
WITHOUT EXPLICIT PERMISSION
FROM TCG.

FILE: 18055	ENGINEER: CHRIS LEWIS	DRAWN BY: J. BAER	DATE: 05/22/12
REV: 001	SCALE: N.T.S.	SHEET: 102 OF 103	

CONTACT SHEET

TCG:

DEBORAH TULPANO
ED HWARY

(703) 251-6977
(703) 251-6963

EXPRESS-TEK:

SHANE LUPO
PROJECT ENGINEER
MATT MORRIS
PERMITTING ENGINEER
JOHN BAER
DRAFTER

(540) 752-6891
(540) 752-6891
(540) 752-6891
(540) 752-6891

UTILITIES:

MCS UTILITY (VA)
WILLIAMS PIPE LINE (TRANSCONTINENTAL)
EMERGENCY 24 HOUR NUMBER
VIRGINIA POWER
EMERGENCY 24 HOUR NUMBER

1-(800) 532-7001
(703) 368-3255 X2223
1-800-257-7777
(540) 341-3150
1-888-667-3000

24 HOUR NUMBER
WILLIAM POOLE
GARY DORHAN
TRANS. P/W ENCROACHMENT

NATURAL GAS

WASHINGTON GAS
EMERGENCY 24 HOUR NUMBER
COLONIAL PIPE LINE
EMERGENCY 24 HOUR NUMBER
COLUMBIA GAS
EMERGENCY 24 HOUR NUMBER

(703) 750-4205
(703) 750-1000
(703) 405-5112
1-800-926-2728
(540) 270-0984
1-800-635-7191

CHUCK WHITLEY
LARRY LOWR
RONALD RECTOR

PERMITTING AGENCIES:

CITY OF ALEXANDRIA

LUCY STOKES
PROFESSIONAL ENGINEER

(703) 638-4324

CITY OF ALEXANDRIA

EMILY BAKER
PROFESSIONAL ENGINEER

(703) 638-4327

TRANSIT AUTHORITY (WMATA)

ROBERT JENKINS
CELL

(202) 962-5212
(202) 385-8022

VOOT (NORTHERN VIRGINIA)

JASON WILLIAMS
FIELD ENGINEER

(703) 383-2862

WMATA

ROBERT ROCKEFELLER
CIVIL ENGINEER

(202) 962-5186

WMATA

MICHAEL MINNA

(202) 962-5743

WMATA

DAVID BRANSKY

(202) 962-5743

CSX

(904) 633-4464

NOTE: THIS INFORMATION IS OR WILL BE BASED ON AREA OF WORK



Teleport Communications Group
7777 Leesbury Plaza, Suite 100N
Falls Church, VA 22048

675 N WASHINGTON ST
AS-BUILT FIBER ROUTE
ALEXANDRIA, VA

NOT FOR OUTSIDE DISCLOSURE
WITHOUT EXPLICIT PERMISSION
FROM TCG.

FILE: 16055

ENGINEER: CHRIS LEWIS

DRAWN BY: J. BAER

DATE: 05/22/12

SCALE: N.T.S.

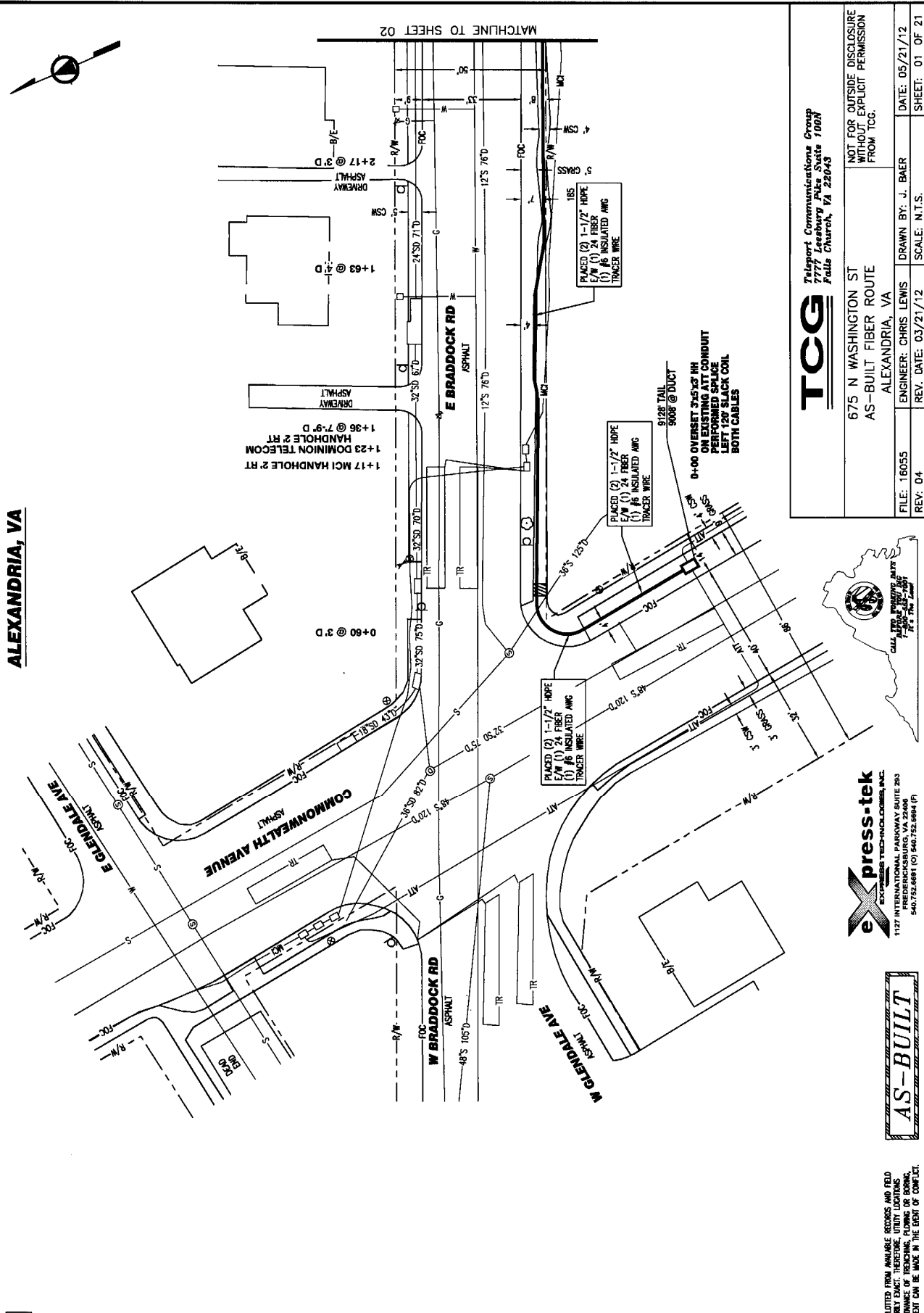
PN#:

REV: 001

SHEET: TO3 OF TO3

ALEXANDRIA, VA

RIGHT OF WAY DERIVED FROM
ALEXANDRIA CAD GIS



NOTE:
UNDERGROUND UTILITIES HAVE BEEN PLOTTED FROM AVAILABLE RECORDS AND FIELD SURVEYING. CONTRACTOR SHALL VERIFY THE LOCATION AND DEPTH OF ALL UTILITIES. CONTRACTOR SHALL BE RESPONSIBLE FOR VERIFYING THE LOCATION AND DEPTH OF ALL UTILITIES. CONTRACTOR SHALL BE RESPONSIBLE FOR VERIFYING THE LOCATION AND DEPTH OF ALL UTILITIES. CONTRACTOR SHALL BE RESPONSIBLE FOR VERIFYING THE LOCATION AND DEPTH OF ALL UTILITIES.

AS-BUILT

express-tek
EXPRESS TECHNOLOGIES, INC.
1127 INTERNATIONAL PARKWAY SUITE 200
FREDERICKSBURG, VA 22400
540.752.6891 (O) 540.752.6894 (F)

TCG
Teleport Communications Group
7777 Leesbury Pkwy Suite 100N
Falls Church, VA 22043

675 N WASHINGTON ST
AS-BUILT FIBER ROUTE
ALEXANDRIA, VA

FILE: 18055
ENGINEER: CHRIS LEWIS
DRAWN BY: J. BAER
DATE: 05/21/12

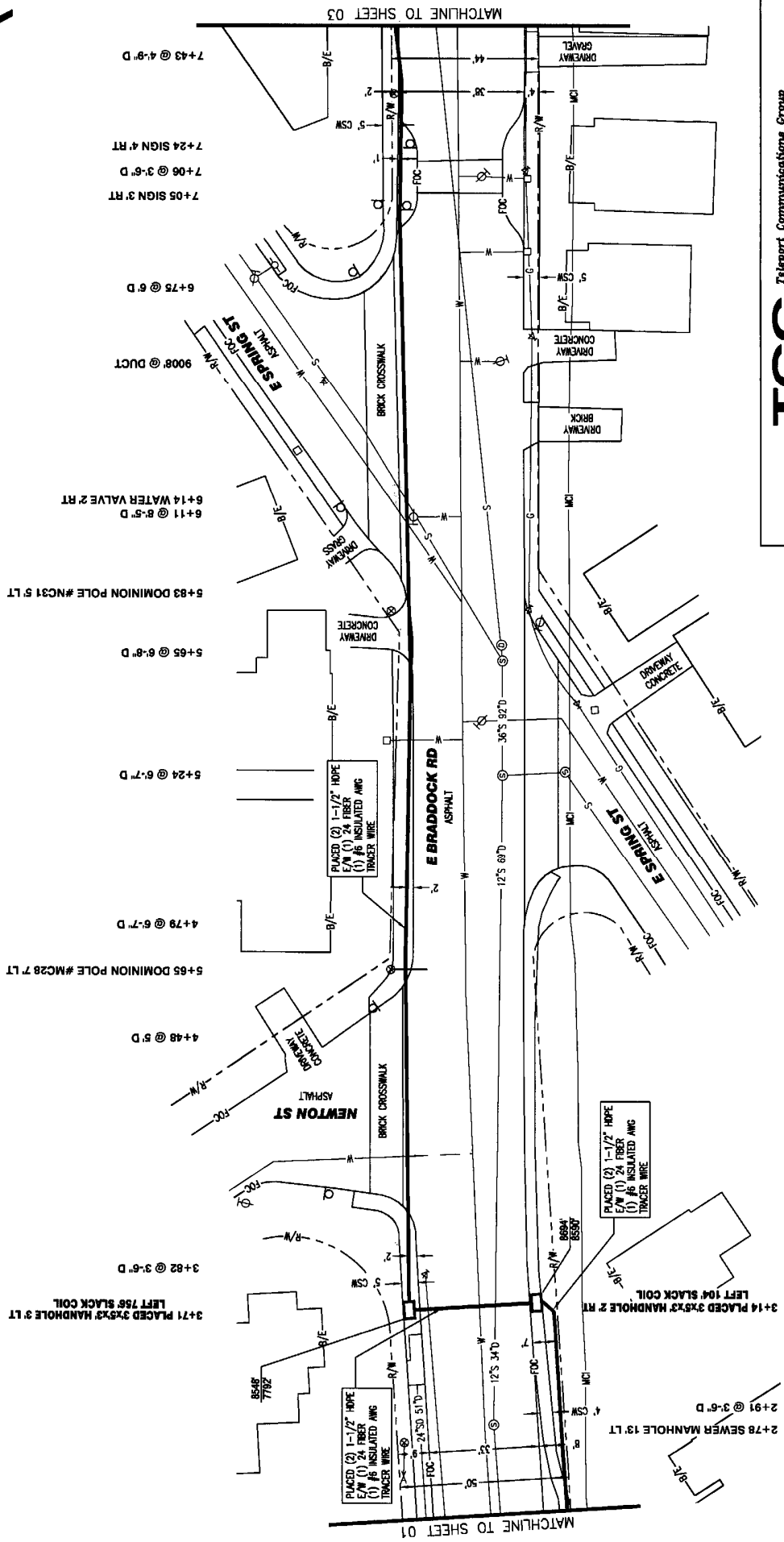
REV: 04
REV. DATE: 03/21/12
SCALE: N.T.S.
SHEET: 01 OF 21

NOT FOR OUTSIDE DISCLOSURE
WITHOUT EXPLICIT PERMISSION
FROM TCG.

MATCHLINE TO SHEET 02

ALEXANDRIA, VA

RIGHT OF WAY DERIVED FROM
ALEXANDRIA CAD 05



TCG Teleport Communications Group
7777 Leesburg Pike Suite 100N
Falls Church, VA 22043

675 N WASHINGTON ST
AS-BUILT FIBER ROUTE
ALEXANDRIA, VA

FILE: 18055 ENGINEER: CHRIS LEWIS DRAWN BY: J. BAER DATE: 05/21/12 SHEET: 02 OF 21
REV: 04 REV. DATE: 03/21/12 SCALE: N.T.S.

eXpress-tek
EXPRESS TECHNOLOGIES, INC.
1127 INTERNATIONAL PARKWAY SUITE 203
FREDERICKSBURG, VA 22406
540.752.6891 (O) 540.752.8884 (F)

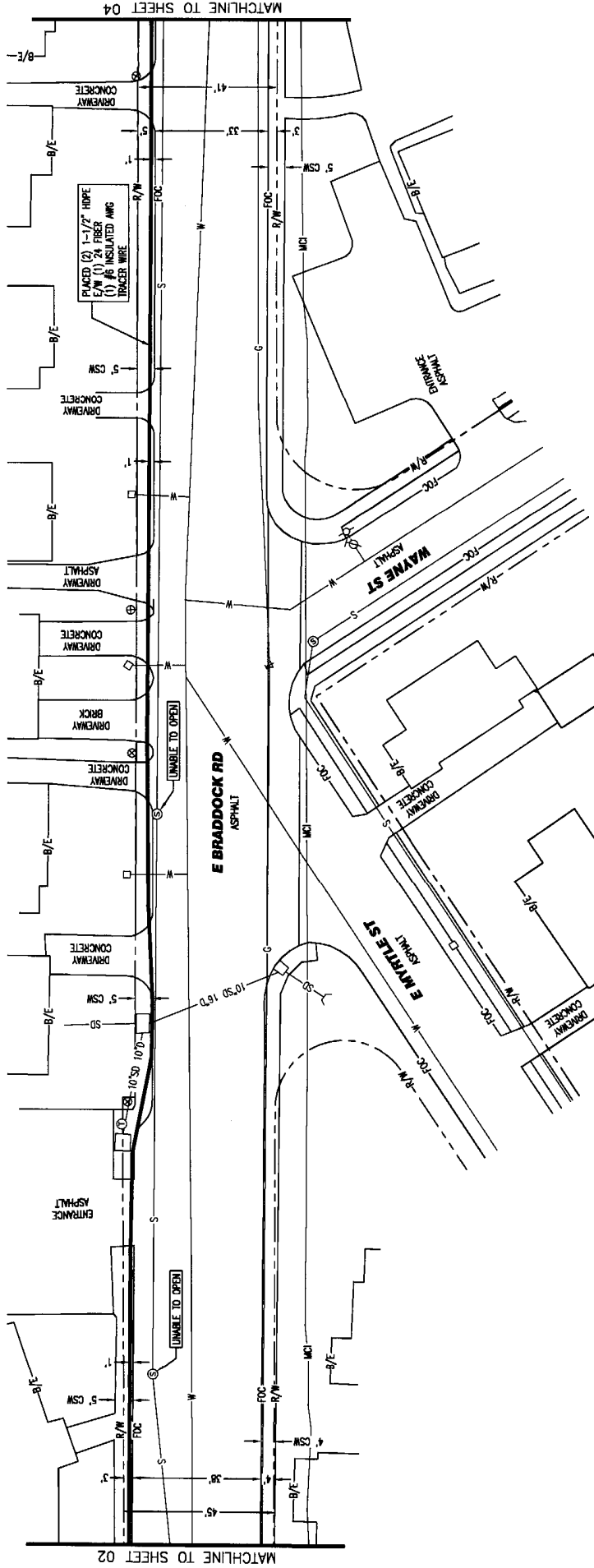
AS-BUILT

NOTE:
UNDERGROUND UTILITIES HAVE BEEN PLOTTED FROM AVAILABLE RECORDS AND FIELD SURVEY DATA. THE CONTRACTOR SHALL VERIFY THE LOCATION AND DEPTH OF ALL UTILITIES. ALL UTILITIES SHALL BE MARKED AT LEAST 100' IN ADVANCE OF TRENCHING, PLACING OR EXCAVATING. ANY CHANGES IN CABLE PLACEMENT CAN BE MADE IN THE EVENT OF CONFLICT.

ALEXANDRIA, VA

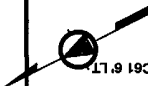
RIGHT OF WAY DERIVED FROM
ALEXANDRIA CAD GIS

- 7+73 @ 7' D
- 8+03+00 SEWER MANHOLE 6' RT
- 8+37 @ 7' D
- 8+61 @ 7'-7" D
- 8+64 BEGIN CATCH BASIN
- 8+69 END CATCH BASIN
- 8+72 TELEPHONE MANHOLE 5' LT
- 8+78 DOMINION POLE # NC13 7' LT
- 9+11 BEGIN CATCH BASIN
- 9+16 END CATCH BASIN
- 9+33 @ 7'-4" D
- 9+58 WATER METER 8' LT
- 9+64 @ 5'-8" D
- 9+71 SEWER MANHOLE 1' RT
- 9+87 DOMINION POLE # NC41 6' LT
- 10+09 @ 5' D
- 10+14 WATER METER 7' LT
- 10+30 DOMINION POLE # NC32 7' LT
- 10+50 @ 4'-8" D
- 10+64 WATER METER 7' LT
- 10+90 @ 5' D
- 11+34 @ 6'-2" D
- 11+67 @ 7'-3" D
- 11+87 DOMINION POLE # NC61 6' LT
- 11+98 @ 7' D



MATCHLINE TO SHEET 02

MATCHLINE TO SHEET 04



Teleport Communications Group
2777 L.L. Ruffalo Suite 100N
Falls Church, VA 22043

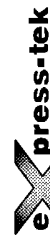
675 N WASHINGTON ST
AS-BUILT FIBER ROUTE
ALEXANDRIA, VA

NOT FOR OUTSIDE DISCLOSURE
WITHOUT EXPLICIT PERMISSION
FROM TCG.

FILE: 16055
REV: 04

ENGINEER: CHRIS LEWIS
DRAWN BY: J. BAER

DATE: 05/21/12
SHEET: 03 OF 21



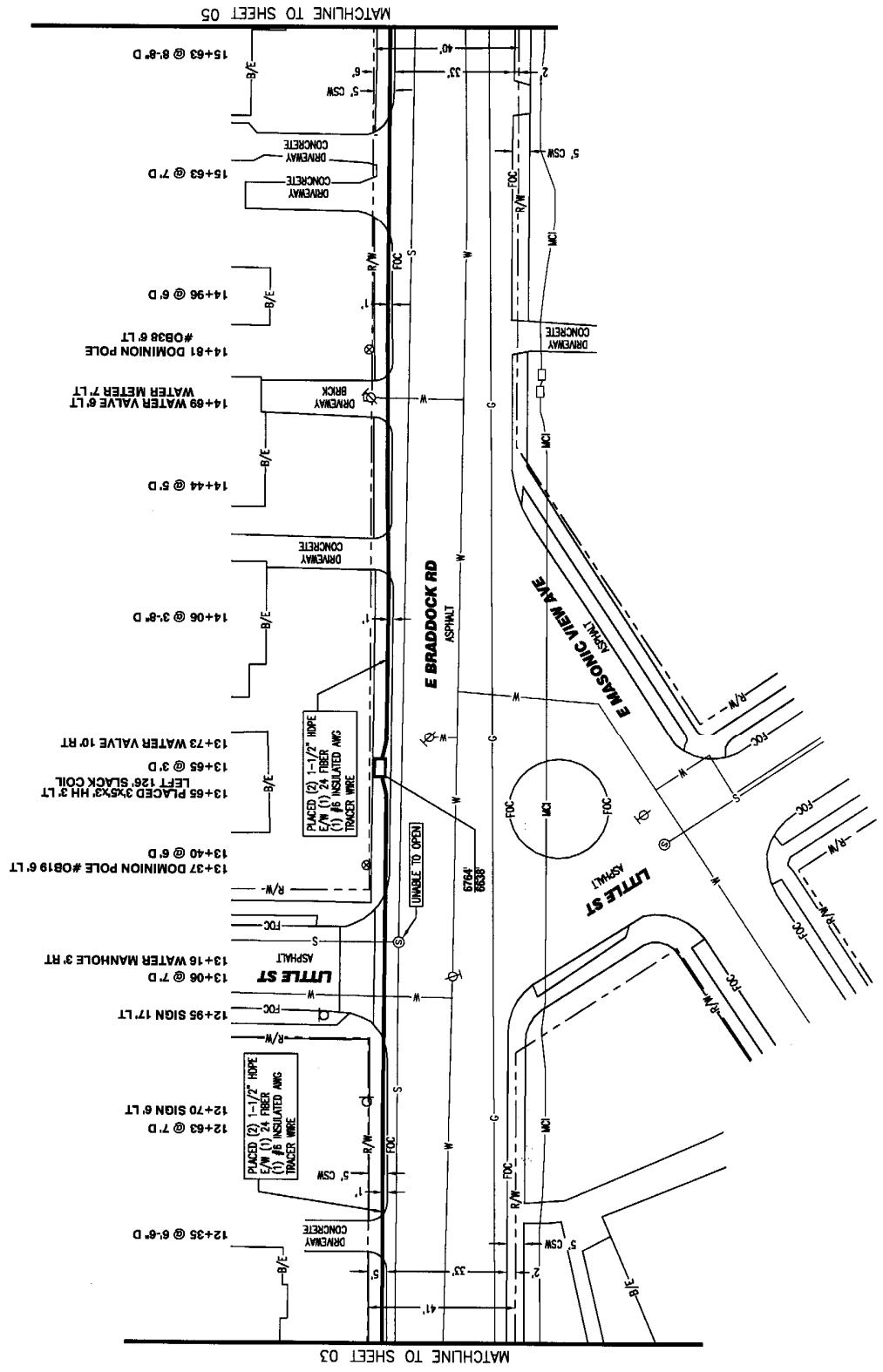
EXPRESS TECHNOLOGIES, INC.
1127 INTERNATIONAL PARKWAY SUITE 203
FREDERICKSBURG, VA 22406
540.752.8881 (O) 540.752.8884 (F)



NOTE:
UNDERGROUND UTILITIES HAVE BEEN PLOTTED FROM AVAILABLE RECORDS AND FIELD
OBSERVATIONS BUT ARE NOT NECESSARILY EXACT. THEREFORE, UTILITY LOCATIONS
WILL BE VERIFIED AT LEAST 100' IN ADVANCE OF TRENCHING, PLUMBING OR BORING,
SO THAT CHANGES IN CABLE PLACEMENT CAN BE MADE IN THE EVENT OF CONFLICT.

ALEXANDRIA, VA

RIGHT OF WAY DERIVED FROM ALEXANDRIA CAD GIS



MATCHLINE TO SHEET 05

MATCHLINE TO SHEET 03



Teleport Communications Group
7777 Leesburg Pike Suite 100N
Falls Church, VA 22043

675 N WASHINGTON ST AS-BUILT FIBER ROUTE ALEXANDRIA, VA		NOT FOR OUTSIDE DISCLOSURE WITHOUT EXPLICIT PERMISSION FROM TCG.	
FILE: 16055	ENGINEER: CHRIS LEWIS	DRAWN BY: J. BAER	DATE: 05/21/12
REV: 04	REV. DATE: 03/21/12	SCALE: N.T.S.	SHEET: 04 OF 21



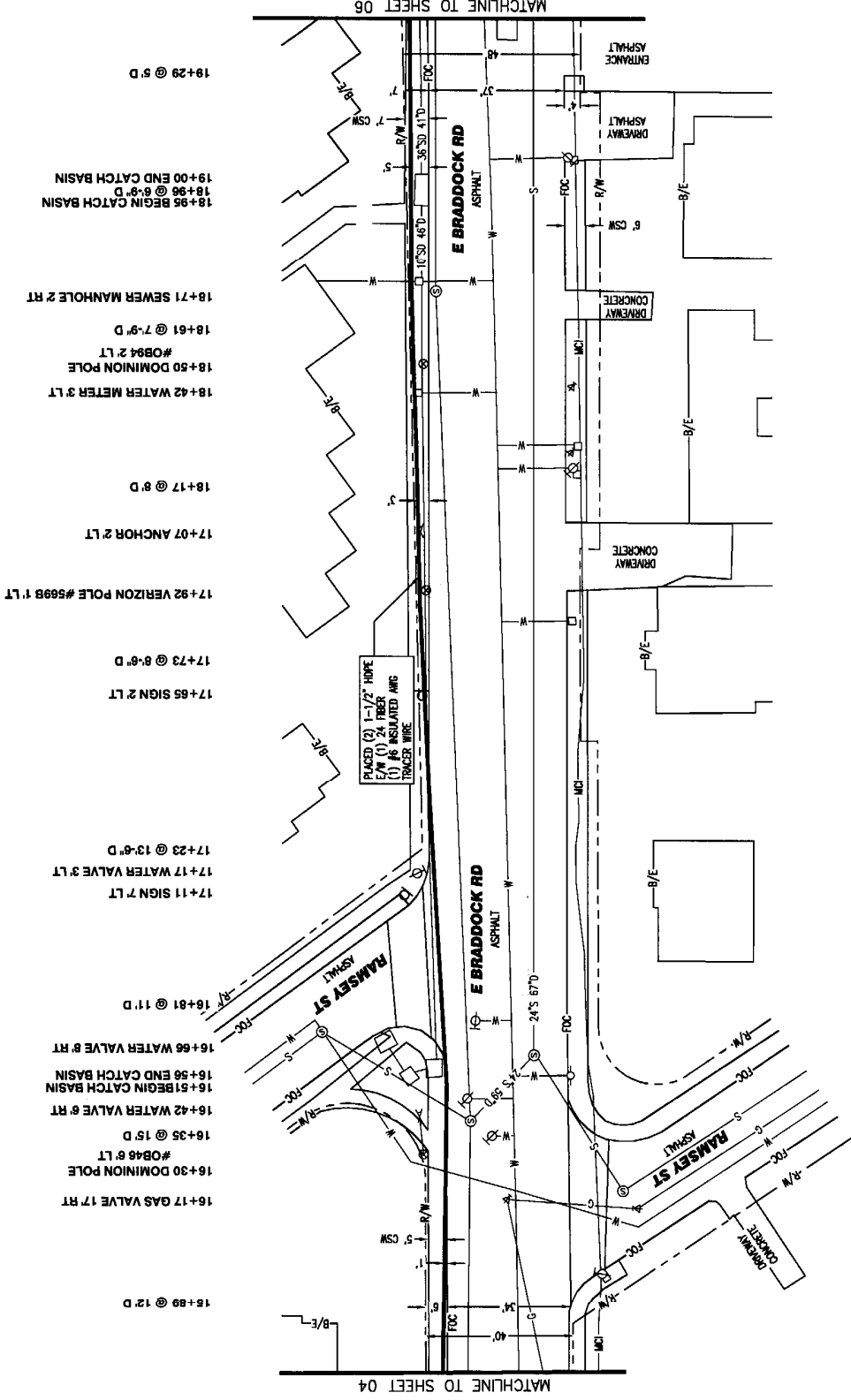
eXpress-tek
EXPRESS TECH-NOLOGIES, INC.
1127 INTERMEDIAL PARKWAY SUITE 203
FREDERICKSBURG, VA 22404
540.752.6861 (T) 540.752.6864 (F)



NOTE:
UNDERGROUND UTILITIES HAVE BEEN PLOTTED FROM AVAILABLE RECORDS AND FIELD
SURVEY DATA. THE CONTRACTOR SHALL VERIFY THE LOCATION AND DEPTH OF ALL
UTILITIES PRIOR TO ANY WORK. THE CONTRACTOR SHALL BE RESPONSIBLE FOR
OBTAINING ALL NECESSARY PERMITS AND SHALL BE RESPONSIBLE FOR ANY
CHANGES IN CABLE PLACEMENT THAT MAY BE MADE IN THE EVENT OF CONFLICT.

ALEXANDRIA, VA

RIGHT OF WAY DERIVED FROM
ALEXANDRIA CAD 05



PLACED (2) 1-1/2" HOPE
1/2" (1) 24 FIBER
(1) 36 INSULATED ANG
TRACER WIRE

TCG Teleport Communications Group
7777 Leesburg Pike Suite 100N
Falls Church, VA 22043

675 N WASHINGTON ST
AS-BUILT FIBER ROUTE
ALEXANDRIA, VA

FILE: 16055 ENGINEER: CHRIS LEWIS DRAWN BY: J. BAER DATE: 05/21/12
REV: 04 REV. DATE: 03/21/12 SCALE: N.T.S. SHEET: 05 OF 21



eXpress-tek
EXPRESS TECHNOLOGIES, INC.
1127 INTERMEDIAL PARKWAY SUITE 203
FREDERICKSBURG, VA 22404
540.752.8891 (C) 540.752.8894 (F)

AS-BUILT

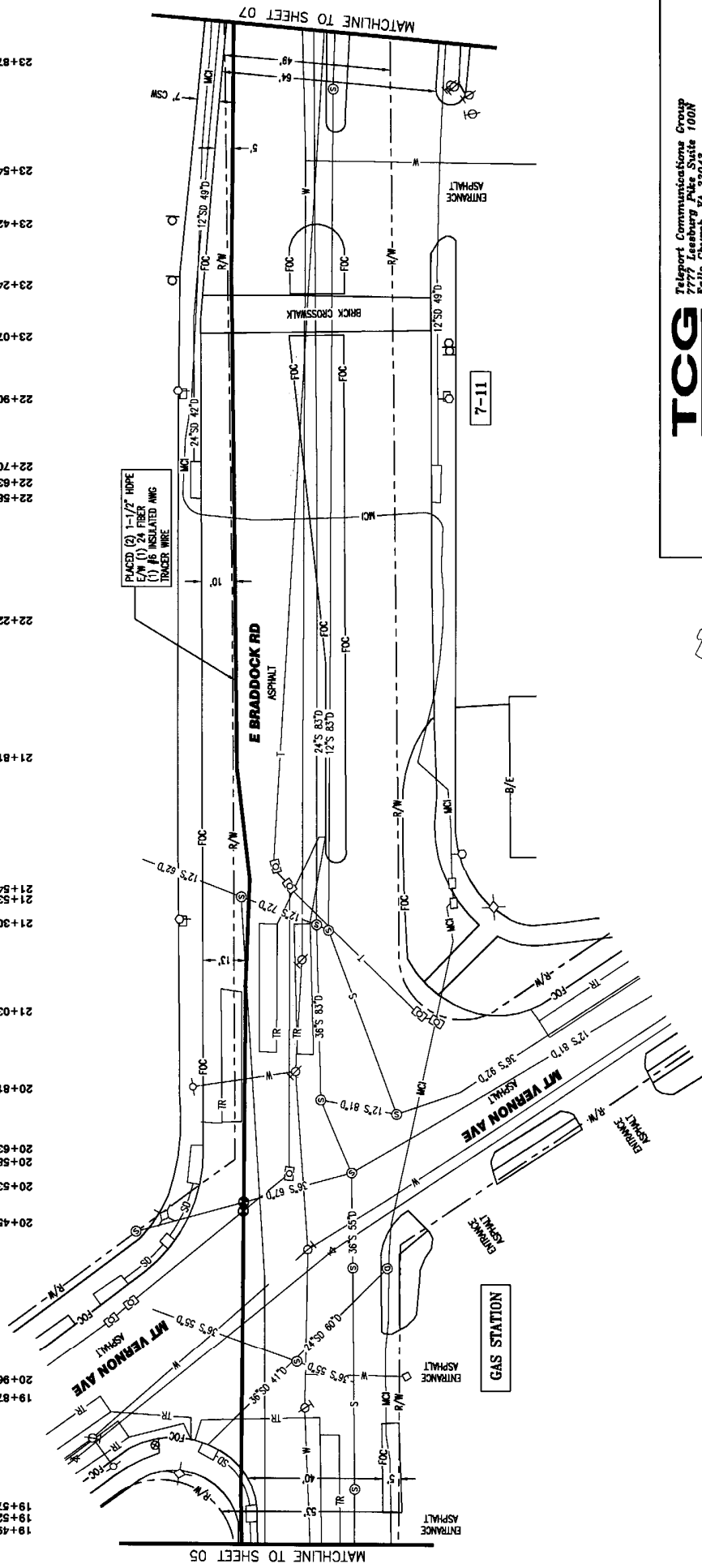
NOTE:
UNDERGROUND UTILITIES HAVE BEEN LOCATED FROM AVAILABLE RECORDS AND FIELD SURVEYING. THE CONTRACTOR SHALL VERIFY THE LOCATION AND DEPTH OF ALL UTILITIES. ANY CHANGES IN CABLE PLACEMENT SHALL BE MADE IN THE EVENT OF CONFLICT.

ALEXANDRIA, VA

RIGHT OF WAY DERIVED FROM
ALEXANDRIA CAD GIS

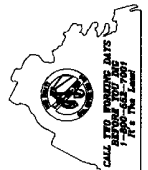
- 19+49 @ 3'-5" D
- 19+52 BEGIN CATCH BASIN
- 19+57 END CATCH BASIN
- 19+87 WATER VALVE 15' RT
- 20+96 SEWER MANHOLE 13' RT
- 20+45 TRAFFIC LIGHT 12' LT
- 20+53 BEGIN CATCH BASIN
- 20+58 @ 4'-6" D
- 20+63 END CATCH BASIN
- 20+81 FIRE HYDRANT 3' LT
- 21+03 @ 8'-9" D
- 21+30 ELECTRIC PULL BOX 6' LT
- 21+53 @ 8" D
- 21+54 SEWER MANHOLE 12' RT
- 21+81 @ 8'-6" D
- 22+22 @ 8'-5" D
- 22+58 BEGIN CATCH BASIN
- 22+63 @ 8'-6" D
- 22+70 END CATCH BASIN
- 22+90 ELECTRIC PULL BOX 5' LT
- 23+07 @ 8'-3" D
- 23+24 SIGN 8' LT
- 23+42 SIGN 11' LT
- 23+54 @ 6'-6" D
- 23+87 @ 4'-3" D

PLACED (2) 1-1/2" HOPE
E/W (1) 24 FIBER
(1) 16 INSULATED AWG
TRACER WIRE



Teleport Communications Group
7777 Leesburg Pike Suite 100N
Falls Church, VA 22043

675 N WASHINGTON ST AS-BUILT FIBER ROUTE		NOT FOR OUTSIDE DISCLOSURE WITHOUT EXPLICIT PERMISSION FROM TCG.	
FILE: 18055	ENGINEER: CHRIS LEWIS	DRAWN BY: J. BAER	DATE: 05/21/12
REV: 04	REV. DATE: 03/21/12	SCALE: N.T.S.	SHEET: 06 OF 21



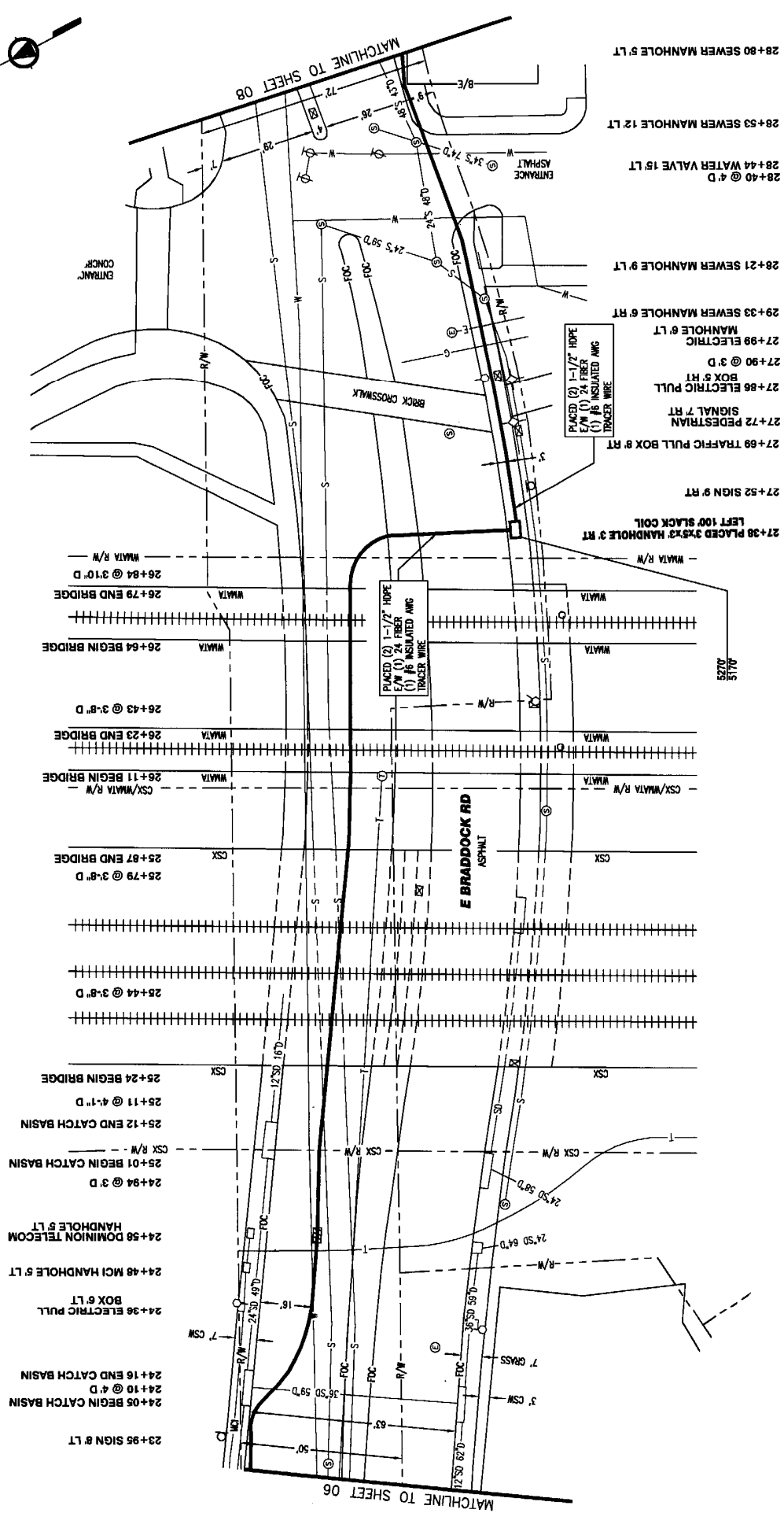
eXpress-tek
EXPRESS TECH-ENCLOSURES, INC.
1127 INTERNATIONAL PARKWAY SUITE 203
FREDERICKSBURG, VA 22406
540.732.6881 (C) 540.732.6884 (F)



NOTE:
UNDERGROUND UTILITIES HAVE BEEN PLOTTED FROM AVAILABLE RECORDS AND FIELD
SURVEY DATA. THE LOCATION OF UTILITIES IS APPROXIMATE. THE LOCATION OF UTILITIES
WILL BE VERIFIED AT LEAST 100' IN ADVANCE OF TRENCHING, PILING OR BORING.
SO THAT CHANGES IN CABLE PLACEMENT CAN BE MADE IN THE EVENT OF CONFLICT.

ALEXANDRIA, VA

RIGHT OF WAY DERIVED FROM
ALEXANDRIA CAD GIS



TCG Teleport Communications Group 7777 Leesburg Pike Suite 100N Falls Church, VA 22043		NOT FOR OUTSIDE DISCLOSURE WITHOUT EXPLICIT PERMISSION FROM TCG.
675 N WASHINGTON ST AS-BUILT FIBER ROUTE ALEXANDRIA, VA		DATE: 05/21/12 SHEET: 07 OF 21
FILE: 16055	ENGINEER: CHRIS LEWIS	DRAWN BY: J. BAER
REV: 04	REV. DATE: 03/21/12	SCALE: N.T.S.



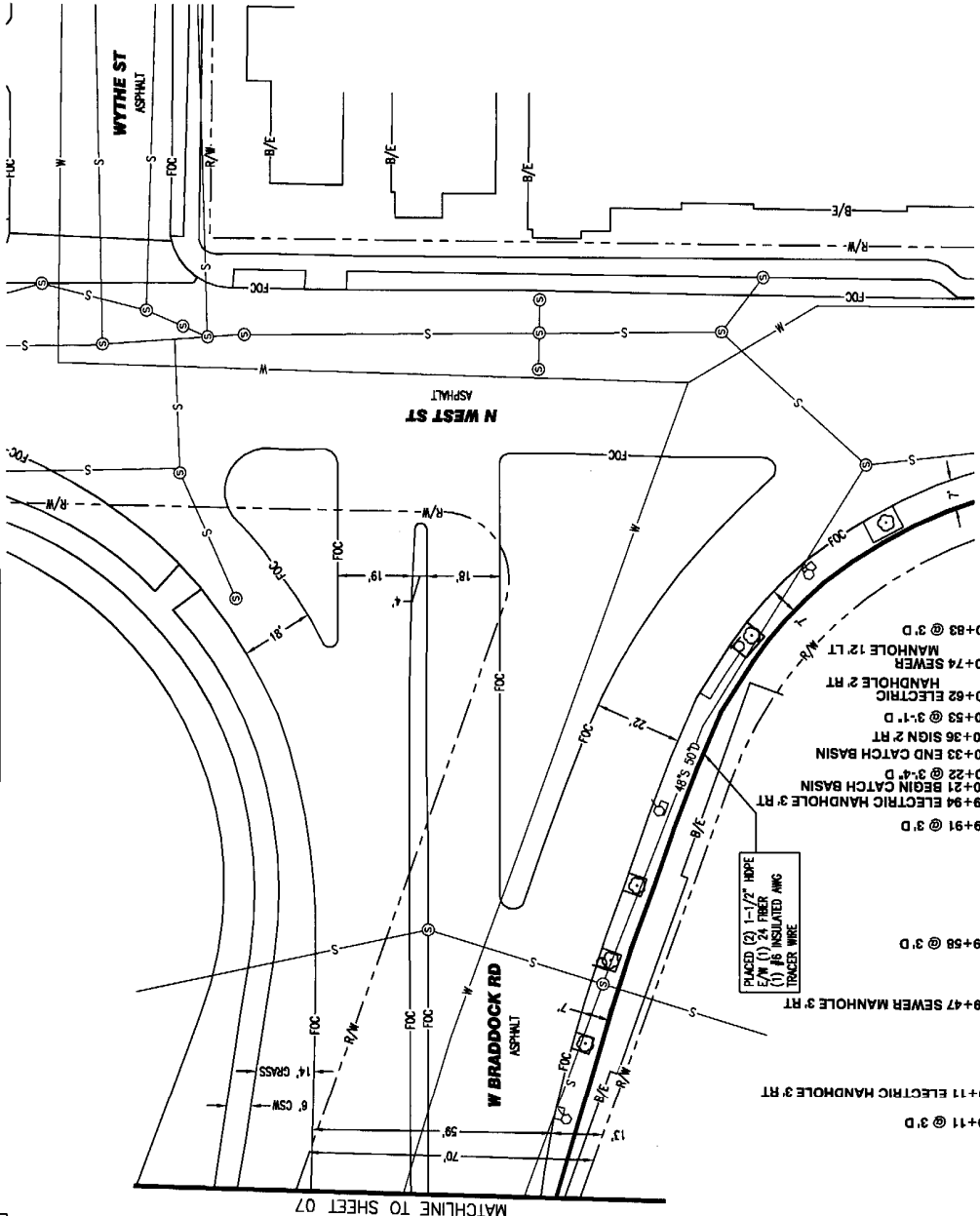
eXpress-tek
 EXPRESS TECHNOLOGIES, INC.
 1127 INTERNATIONAL PARKWAY SUITE 203
 FREDERICKSBURG, VA 22406
 540.732.6681 (C) 540.732.6684 (F)



NOTE:
 UNDERGROUND UTILITIES HAVE BEEN PLOTTED FROM AVAILABLE RECORDS AND FIELD SURVEY. CONTRACTOR SHALL VERIFY ALL UTILITIES AND RECORDS AT THE TIME OF CONSTRUCTION. ANY CHANGES IN UTILITY PLACEMENT OR DEPTH SHALL BE REPORTED TO THE ENGINEER IMMEDIATELY. ANY CHANGES IN UTILITY PLACEMENT SHALL BE MADE IN THE EVENT OF CONFLICT.

ALEXANDRIA, VA

RIGHT OF WAY DERIVED FROM
ALEXANDRIA CAD 05



MATCHLINE TO SHEET 07

MATCHLINE TO SHEET 09



Teleport Communications Group
7777 Leesburg Plaza, Suite 100N
Falls Church, VA 22046



express-tek
EXPRESS TECHNOLOGIES, INC.
1127 INTERNATIONAL PARKWAY SUITE 203
FREDERICKSBURG, VA 22406
540.753.6894 (O) 540.752.6894 (F)



675 N WASHINGTON ST
AS-BUILT FIBER ROUTE
ALEXANDRIA, VA

FILE: 16055
ENGINEER: CHRIS LEWIS
DRAWN BY: J. BAER
DATE: 05/21/12

REV: 04
REV. DATE: 03/21/12
SCALE: N.T.S.

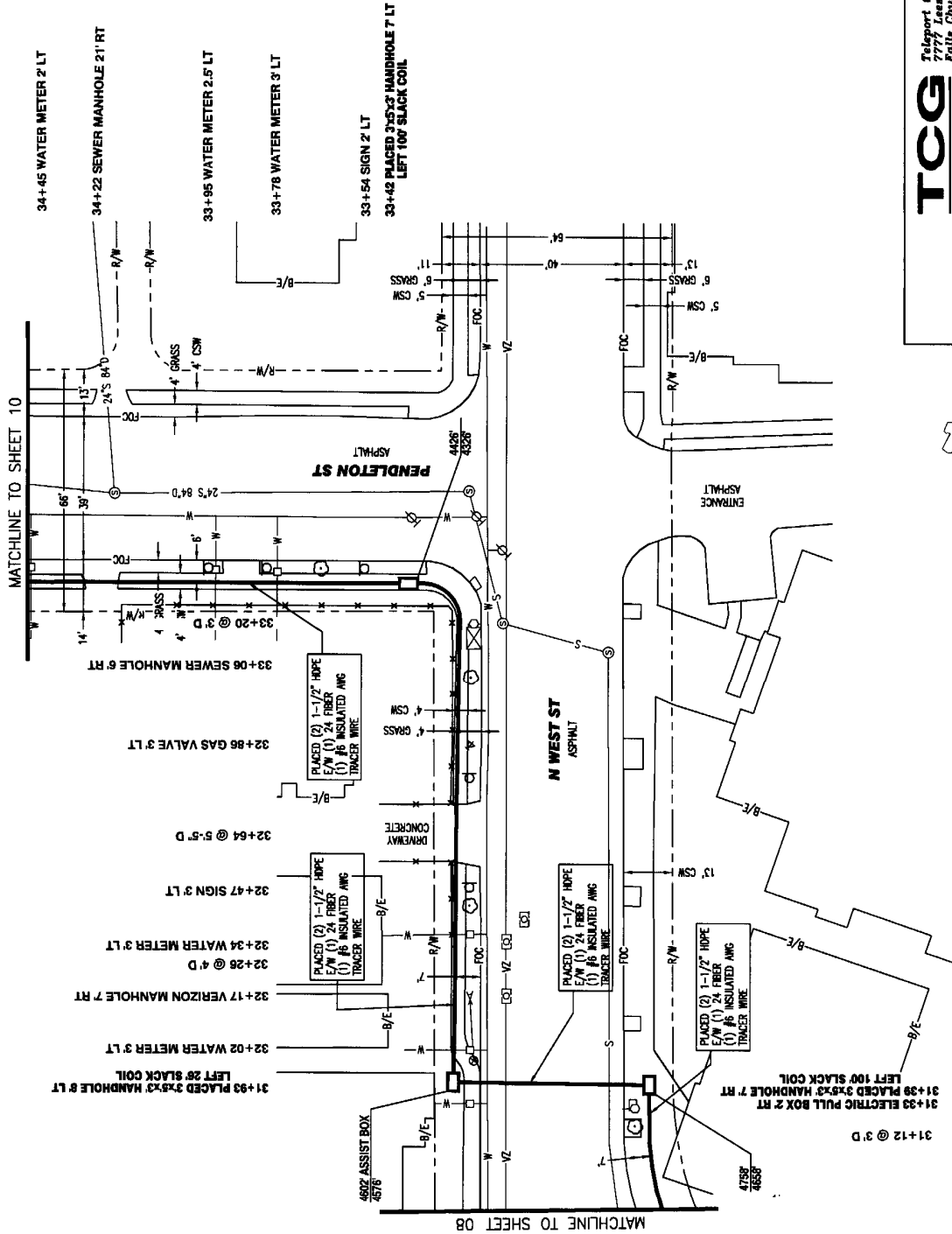
NOT FOR OUTSIDE DISCLOSURE
WITHOUT EXPLICIT PERMISSION
FROM TCG.

SHEET: 08 OF 21

NOTE:
UNDERGROUND UTILITIES HAVE BEEN LOCATED FROM AVAILABLE RECORDS AND FIELD
CONSTRUCTION UTILITIES HAVE BEEN LOCATED FROM FIELD SURVEY. THESE UTILITIES
WILL BE MARKED AT LEAST 100' IN ADVANCE OF TRENCHING, PLACING OR BORING,
SO THAT CHANGES IN CABLE PLACEMENT CAN BE MADE IN THE EVENT OF CONFLICT.

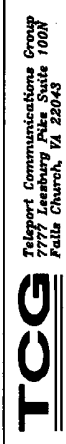
ALEXANDRIA, VA

RIGHT OF WAY DERIVED FROM ALEXANDRIA CAD 65



MATCHLINE TO SHEET 10

MATCHLINE TO SHEET 08



675 N WASHINGTON ST AS-BUILT FIBER ROUTE ALEXANDRIA, VA		DATE: 05/21/12
FILE: 16055	ENGINEER: CHRIS LEWIS	SCALE: N.T.S.
REV: 04	DRAWN BY: J. BAER	SHEET: 09 OF 21



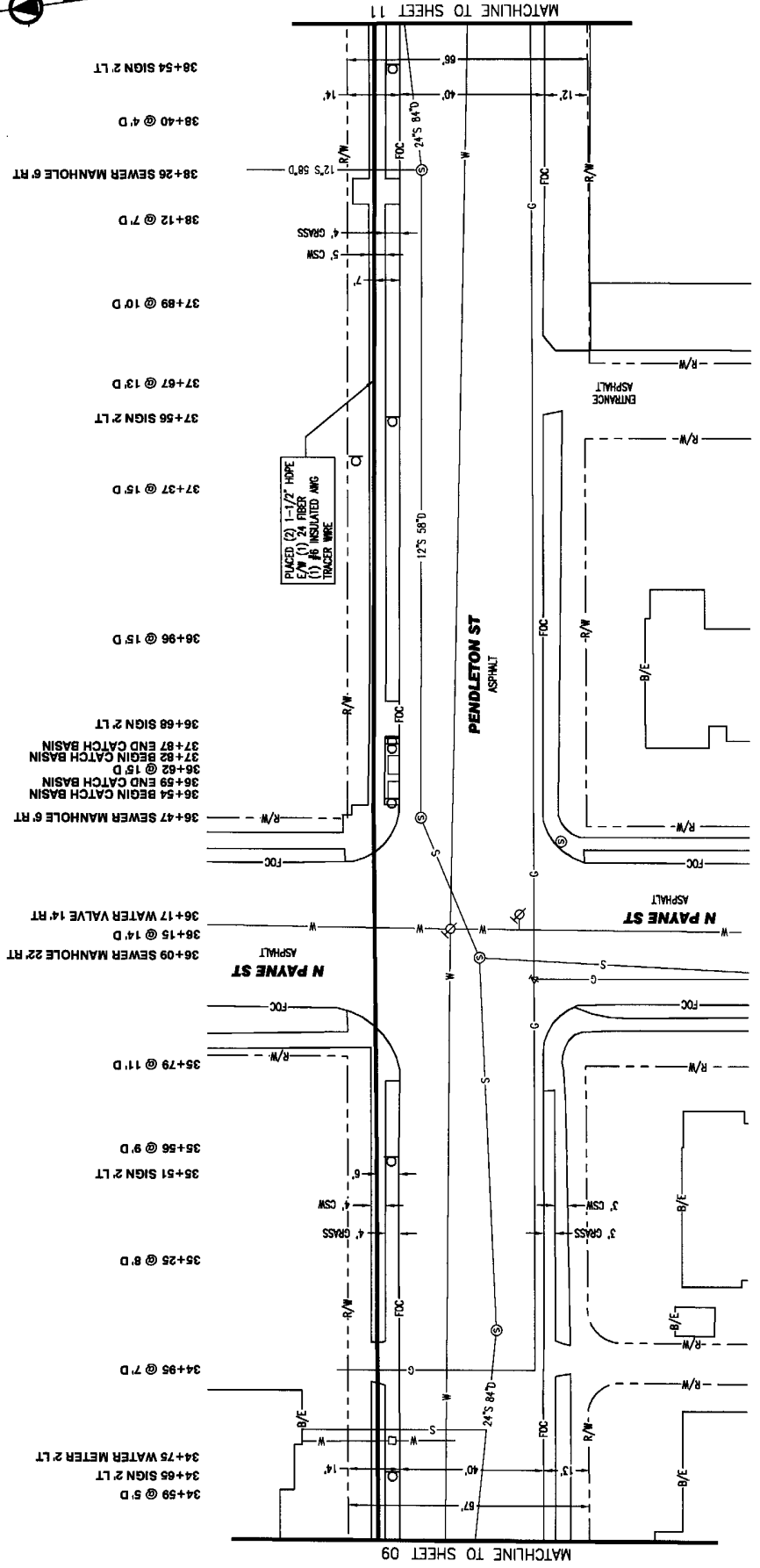
express-tek
EXPRESS TECHNOLOGIES, INC.
1127 INTERNATIONAL PARKWAY SUITE 203
FREDERICKSBURG VA 22406
540.732.6681 (C) 540.752.6664 (F)



NOTE:
UNDERGROUND UTILITIES HAVE BEEN PLOTTED FROM AVAILABLE RECORDS AND FIELD OBSERVATIONS BUT ARE NOT NECESSARILY EXACT. THEREFORE, UTILITY LOCATIONS WILL BE VERIFIED AT LEAST 100' IN ADVANCE OF TRENCHING, PLACING OR BORING, SO THAT CHANGES IN CABLE PLACEMENT CAN BE MADE IN THE EVENT OF CONFLICT.

ALEXANDRIA, VA

RIGHT OF WAY DERIVED FROM
ALEXANDRIA CAD GIS



- 34+59 @ 5' D
- 34+65 SIGN 2 LT
- 34+75 WATER METER 2 LT
- 34+95 @ 7' D
- 35+25 @ 8' D
- 35+51 SIGN 2 LT
- 35+56 @ 9' D
- 35+79 @ 11' D
- 36+09 SEWER MANHOLE 22 RT
- 36+15 @ 14' D
- 36+17 WATER VALVE 14 RT
- 36+47 SEWER MANHOLE 6 RT
- 36+54 BEGIN CATCH BASIN
- 36+59 END CATCH BASIN
- 36+62 @ 15' D
- 36+82 BEGIN CATCH BASIN
- 37+87 END CATCH BASIN
- 36+68 SIGN 2 LT
- 36+96 @ 15' D
- 37+37 @ 15' D
- 37+56 SIGN 2 LT
- 37+67 @ 13' D
- 37+89 @ 10' D
- 38+12 @ 7' D
- 38+26 SEWER MANHOLE 6 RT
- 38+40 @ 4' D
- 38+54 SIGN 2 LT

PLACED (2) 1-1/2\" HOPE
E/W (1) 24 FIBER
(1) #6 INSULATED AWG
TRACER WIRE

TCG
Teleport Communications Group
7777 Leesburg Pike, Suite 100N
Falls Church, VA 22046

675 N WASHINGTON ST
AS-BUILT FIBER ROUTE
ALEXANDRIA, VA

ENGINEER: CHRIS LEWIS
DRAWN BY: J. BAER
DATE: 05/21/12

FILE: 16055
REV: 04
REV. DATE: 03/21/12
SCALE: N.T.S.
SHEET: 10 OF 21



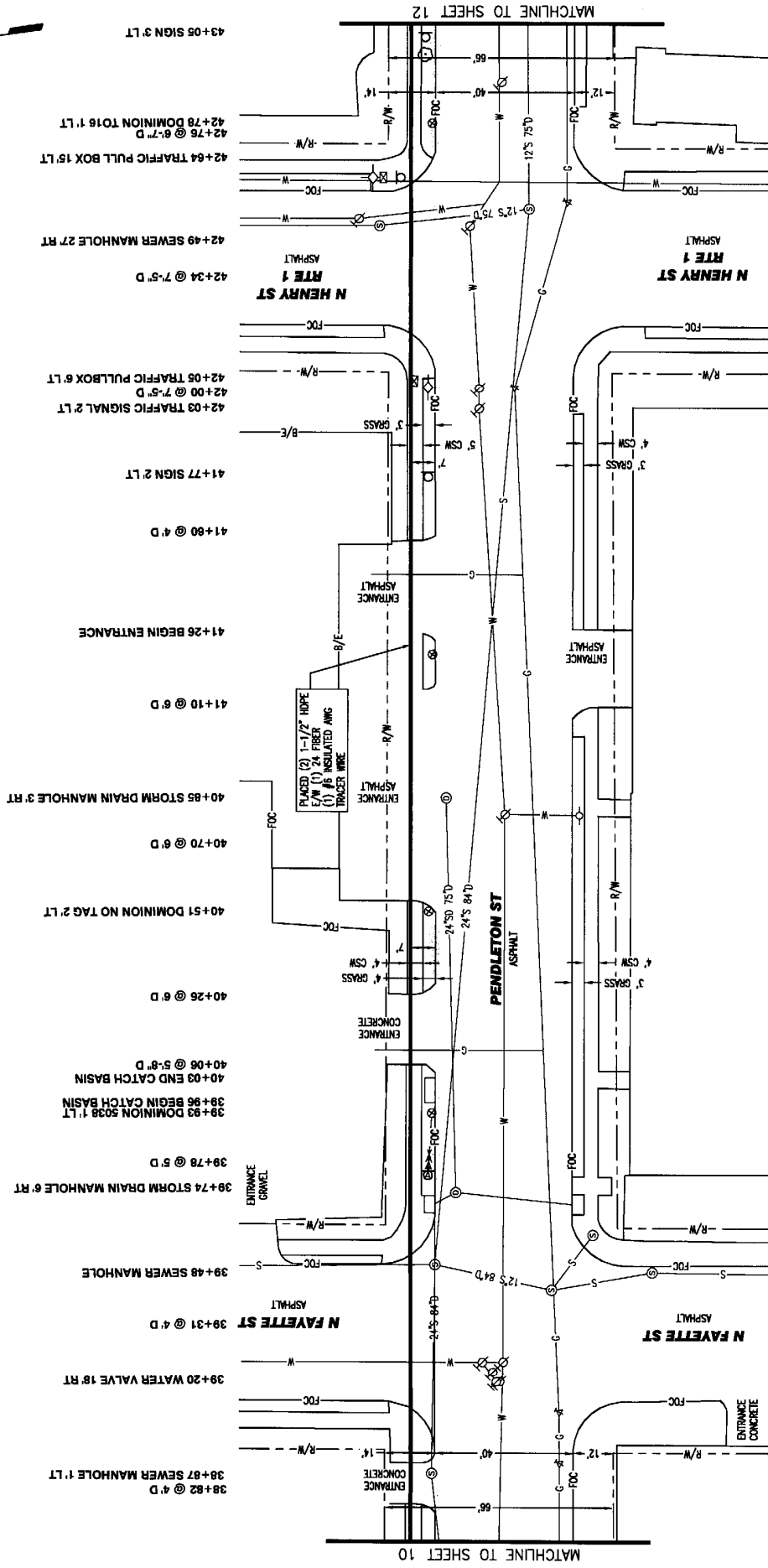
eXpress-tek
EXPRESS TECHNOLOGIES, INC.
1127 INTERNATIONAL PARKWAY SUITE 200
FREDERICKSBURG, VA 22408
540.752.6681 (O) 540.752.6684 (F)



NOTE:
CONTRACTOR UTILITIES HAVE BEEN PLOTTED FROM AVAILABLE RECORDS AND FIELD
OBSERVATIONS BUT ARE NOT NECESSARILY ACCURATE. THEREFORE, UTILITIES
SHOWN ON THIS PLAN ARE NOT TO BE USED FOR CONSTRUCTION. ALL UTILITIES
WILL BE MARKED AT LEAST 100' IN ADVANCE OF TRENCHING, PILING OR BORING.
SO THAT CHANGES IN CABLE PLACEMENT CAN BE MADE IN THE EVENT OF CONFLICT.

ALEXANDRIA, VA

RIGHT OF WAY DERIVED FROM ALEXANDRIA CAD 05



MATCHLINE TO SHEET 12

MATCHLINE TO SHEET 10

NOTE:
 REVISIONS AND NOTES HAVE BEEN PLOTTED FROM AVAILABLE RECORDS AND FIELD OBSERVATIONS BUT ARE NOT NECESSARILY EXACT. THEREFORE, UTILITY LOCATIONS WILL BE VERIFIED AT LEAST 100' IN ADVANCE OF TRENCHING, PILING OR BORING, SO THAT CHANGES IN CABLE PLACEMENT CAN BE MADE IN THE EVENT OF CONFLICT.



eXpress-tek
 EXPRESS TECHNOLOGIES, INC.
 1127 INTERNATIONAL PARKWAY SUITE 203
 FREDERICKSBURG, VA 22406
 540.733.6681 (O) 540.735.6684 (F)

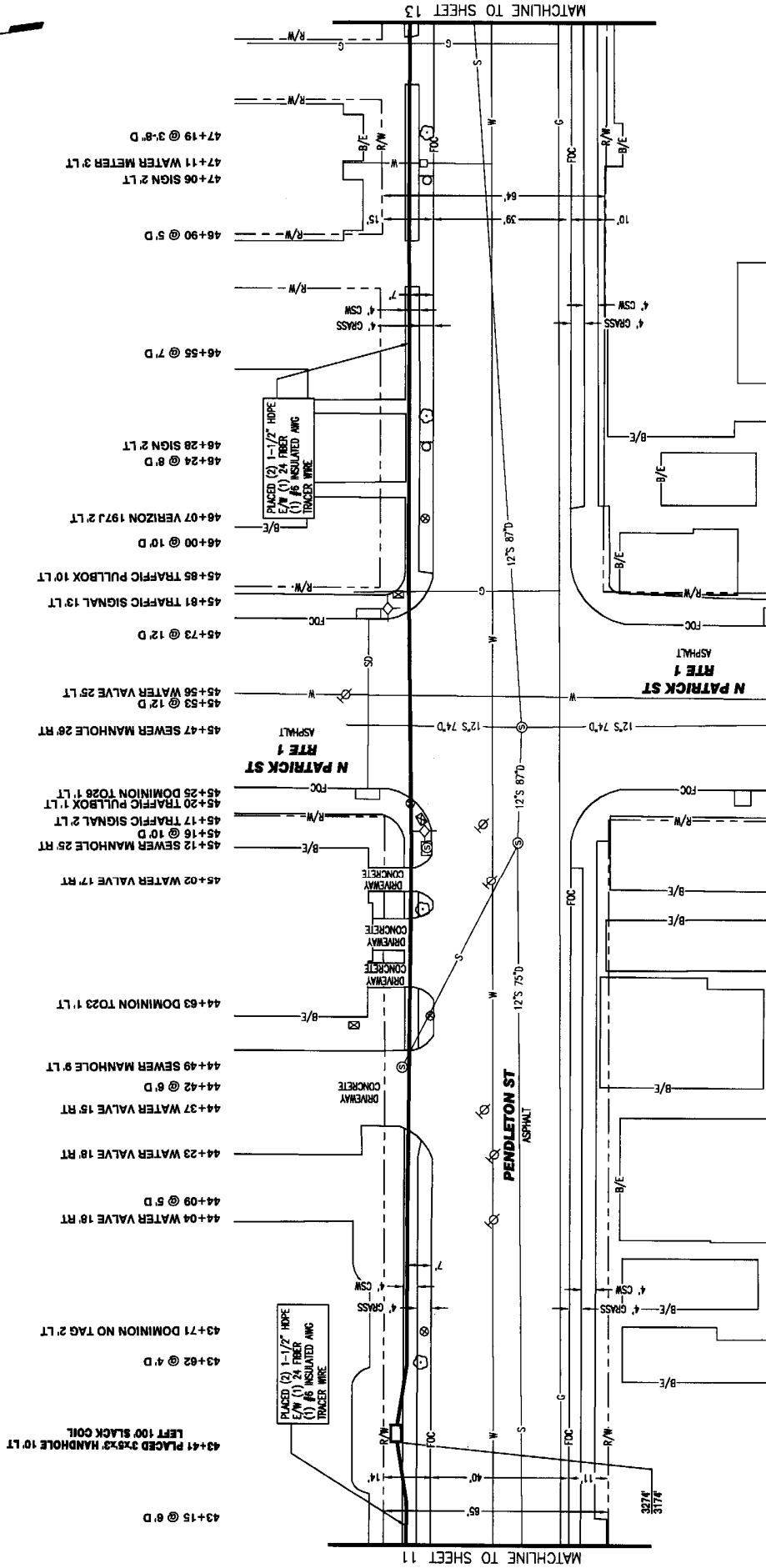


Teleport Communications Group
 7777 Leesburg Pike Suite 100N
 Falls Church, VA 22043

675 N WASHINGTON ST AS-BUILT FIBER ROUTE ALEXANDRIA, VA		DATE: 05/21/12
FILE: 18055	ENGINEER: CHRIS LEWIS	DRAWN BY: J. BAER
REV: 04	REV. DATE: 03/21/12	SCALE: N.T.S.
NOT FOR OUTSIDE DISCLOSURE WITHOUT EXPLICIT PERMISSION FROM TCG.		SHEET: 11 OF 21

ALEXANDRIA, VA

RIGHT OF WAY DERIVED FROM
ALEXANDRIA CAD GIS



MATCHLINE TO SHEET 13

MATCHLINE TO SHEET 11

TCG
Teleport Communications Group
7777 Leesburg Pike, Suite 100N
Falls Church, VA 22048

675 N WASHINGTON ST
AS-BUILT FIBER ROUTE
ALEXANDRIA, VA

FILE: 18055
ENGINEER: CHRIS LEWIS
DRAWN BY: J. BAER
DATE: 05/21/12

REV: 04
REV. DATE: 03/21/12
SCALE: N.T.S.
SHEET: 12 OF 21



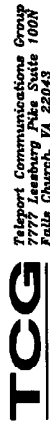
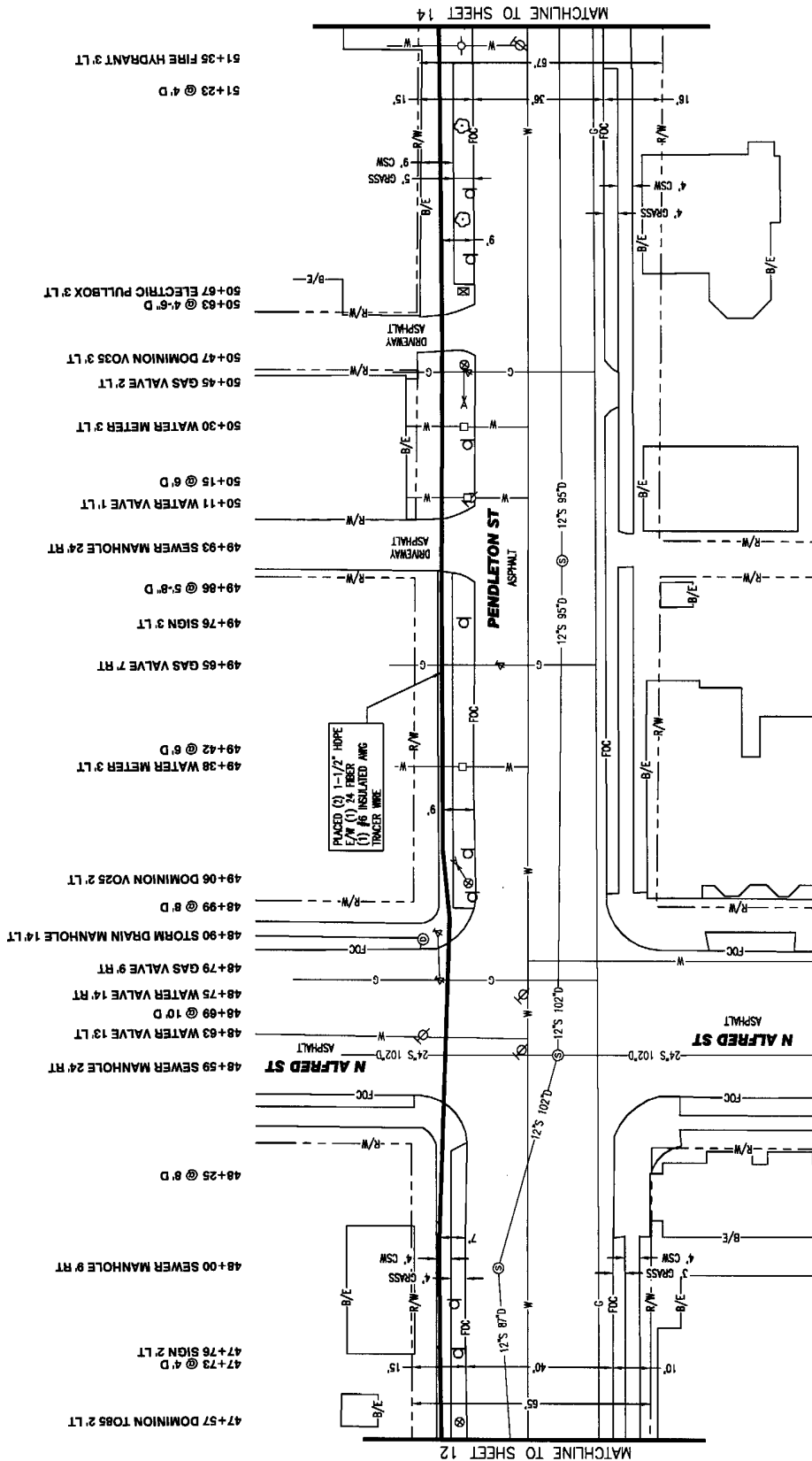
express-tek
EXPRESS TECHNOLOGIES, INC.
1127 INTERNATIONAL PARKWAY SUITE 203
FREDERICKSBURG, VA 22408
540.752.6684 (C) 540.752.6684 (F)



NOTE:
GROUND UTILITIES HAVE BEEN PLOTTED FROM AVAILABLE RECORDS AND FIELD OBSERVATIONS BUT ARE NOT NECESSARILY EXACT. TRENCHING, UTILITY LOCATIONS WILL BE MARKED AT LEAST 100' IN ADVANCE OF TRENCHING, PLANNING OR BORING, SO THAT CHANGES IN CABLE PLACEMENT CAN BE MADE IN THE EVENT OF CONFLICT.

ALEXANDRIA, VA

RIGHT OF WAY DERIVED FROM
ALEXANDRIA CAD GIS



675 N WASHINGTON ST
AS-BUILT FIBER ROUTE
ALEXANDRIA, VA

FILE: 16055
REV: 04

ENGINEER: CHRIS LEWIS
DRAWN BY: J. BAER
SCALE: N.T.S.

DATE: 05/21/12
SHEET: 13 OF 21



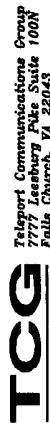
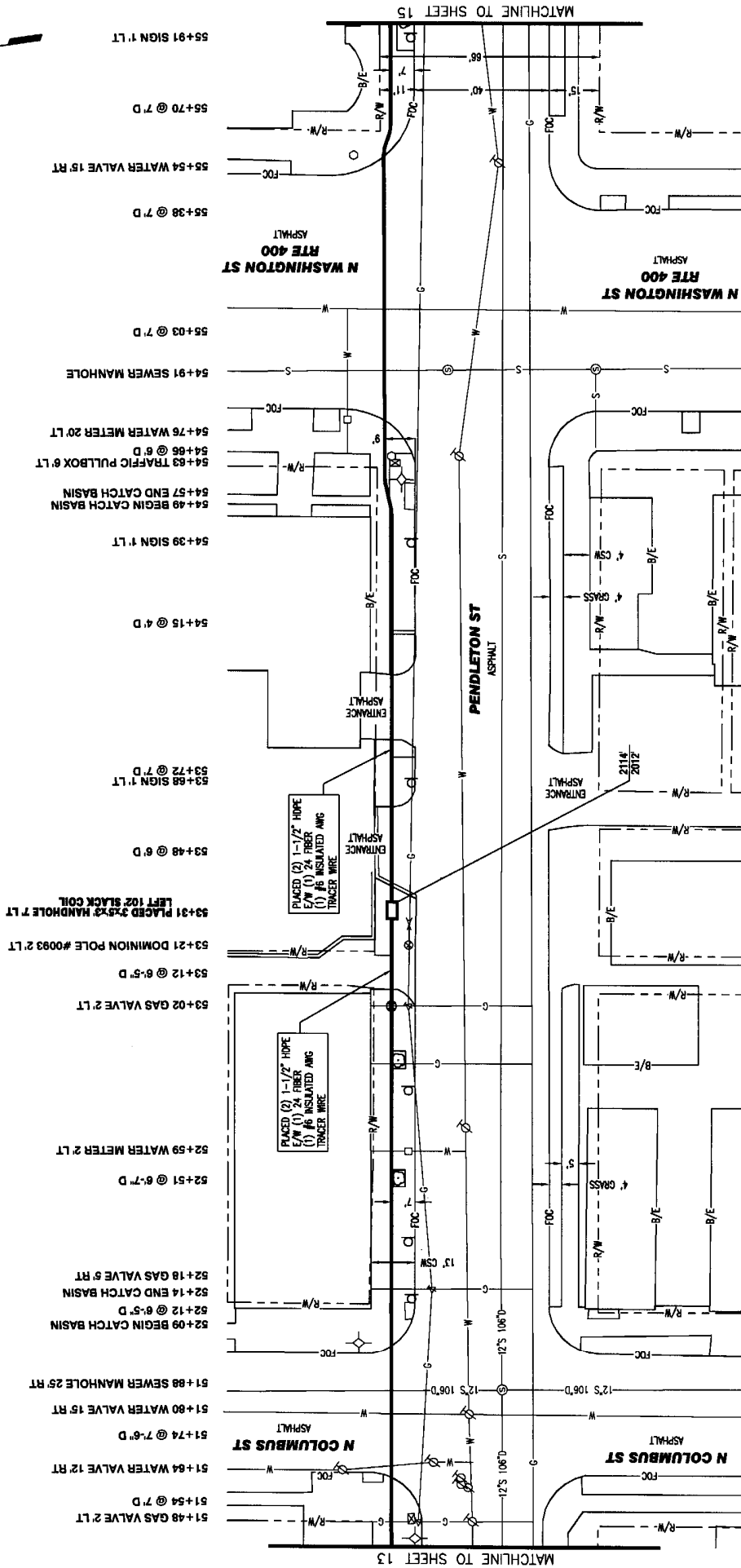
express-tek
EXPRESS TECHNOLOGIES, INC.
1127 INTERNATIONAL PARKWAY SUITE 203
FREDERICKSBURG, VA 22406
540.752.8861 (O) 540.752.6604 (F)



NOTE:
CONDUIT UTILITIES HAVE BEEN PLOTTED FROM AVAILABLE RECORDS AND FIELD CONDITIONS BUT ARE NOT NECESSARILY EXACT. THEREFORE, UTILITY LOCATIONS WILL BE VERIFIED AT LEAST 100' IN ADVANCE OF TRENCHING, PLUMBING OR BORING, SO THAT CHANGES IN CABLE PLACEMENT CAN BE MADE IN THE EVENT OF CONFLICT.

ALEXANDRIA, VA

RIGHT OF WAY DERIVED FROM
ALEXANDRIA CAD GIS



Teleport Communications Group
7777 Leesburg Pike, Suite 100N
Falls Church, VA 22045

675 N WASHINGTON ST AS-BUILT FIBER ROUTE ALEXANDRIA, VA		DATE: 05/21/12
FILE: 18055	ENGINEER: CHRIS LEWIS	SCALE: N.T.S.
REV: 04	REV. DATE: 03/21/12	DRAWN BY: J. BAER
NOT FOR OUTSIDE DISCLOSURE WITHOUT EXPLICIT PERMISSION FROM TCG.		SHEET: 14 OF 21



express-tek
EXPERIENCE. TECH. INNOVATION. INC.
1127 INTERNATIONAL PARKWAY SUITE 203
FREDERICKSBURG, VA 22406
540.752.6691 (O) 540.752.6664 (F)



NOTE:
SURROUND UTILITIES HAVE BEEN PLOTTED FROM AVAILABLE RECORDS AND FIELD
OBSERVATIONS BUT ARE NOT NECESSARILY EXACT. THEREFORE, UTILITY LOCATIONS
WILL BE MARKED AT LEAST 10' IN ADVANCE OF TRENCHING, PLUMBING OR BORING,
SO THAT CHANGES IN CABLE PLACEMENT CAN BE MADE IN THE EVENT OF CONFLICT.

ALEXANDRIA, VA

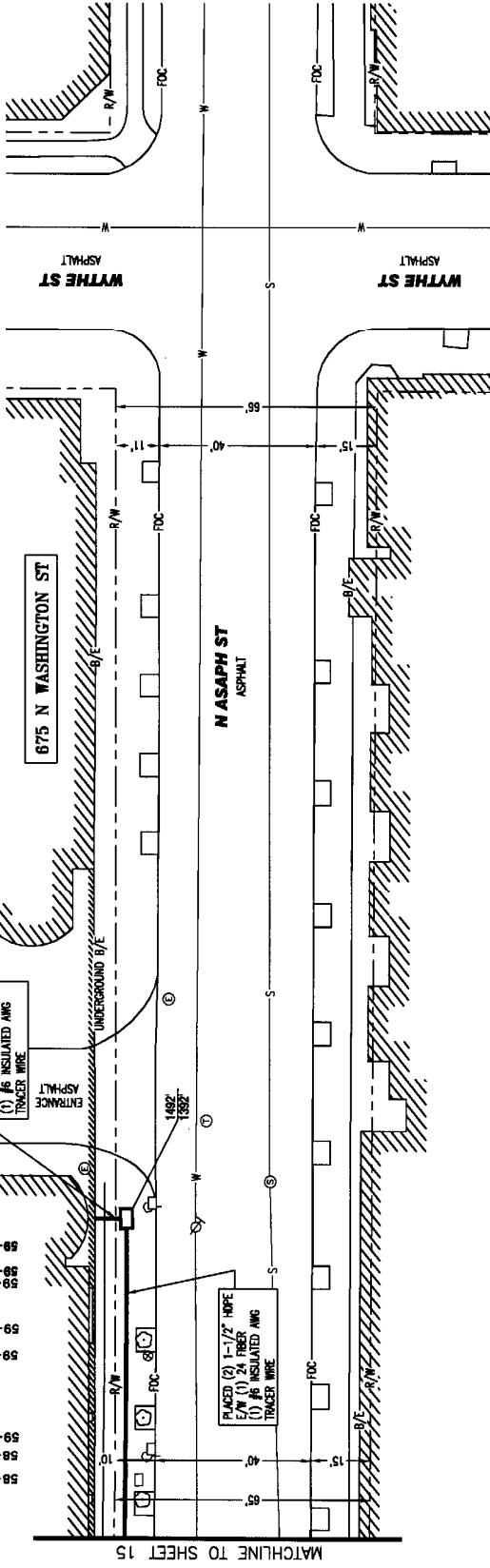
RIGHT OF WAY DERIVED FROM ALEXANDRIA CAD GIS



- 58+90 TRAFFIC HANDHOLE 4' LT
- 58+96 STREET LIGHT 2' LT
- 59+00 @ 3'-6" D
- 59+22 TELEPHONE POLE 2' LT
- 59+28 @ 3'-6" D
- 59+54 WATER VALVE 10' LT
- 59+57 PLACED 3"x3" HANDHOLE 7.5' LT
- LEFT 100' SLACK COIL
- 59+64 FIBER ENTERED P+I PARKING GARAGE
- LEVEL TELEPHONE ROOM @ 42' DEPTH
- PERFORMED GPR AND CORE BORED
- SEE SHEET 17

PLACED (2) 1-1/2" HDPE
E/W (1) 24 FIBER
(1) #6 INSULATED ANG
TRACER WIRE

PLACED (2) 1-1/2" HDPE
E/W (1) 24 FIBER
(1) #6 INSULATED ANG
TRACER WIRE



MATCHLINE TO SHEET 15



express-tek
EXPRESS TECHNOLOGIES, INC.
1127 INTERNATIONAL PARKWAY SUITE 203
FREDERICKSBURG, VA 22406
540.752.6691 (O) 540.752.6694 (F)



NOTE:
UNDERGROUND UTILITIES HAVE BEEN PLOTTED FROM AVAILABLE RECORDS AND FIELD OBSERVATIONS BUT ARE NOT NECESSARILY EXACT. THEREFORE, UTILITY LOCATIONS WILL BE VERIFIED AT LEAST 100' IN ADVANCE OF TRENCHING, PLOWING OR BORING, SO THAT CHANGES IN CABLE PLACEMENT CAN BE MADE IN THE EVENT OF CONFLICT.

TCG
Teleport Communications Group
2000
Falls Church, VA 22043

675 N WASHINGTON ST AS-BUILT FIBER ROUTE ALEXANDRIA, VA		NOT FOR OUTSIDE DISCLOSURE WITHOUT EXPLICIT PERMISSION FROM TCG.
FILE: 16055	ENGINEER: CHRIS LEWIS	DATE: 05/21/12
REV: 04	DRAWN BY: J. BAER	SHEET: 16 OF 21
	REV. DATE: 03/21/12	SCALE: N.T.S.