

# Patrick Henry School and Recreation Center

*DSUP#2016-0009*

City Council



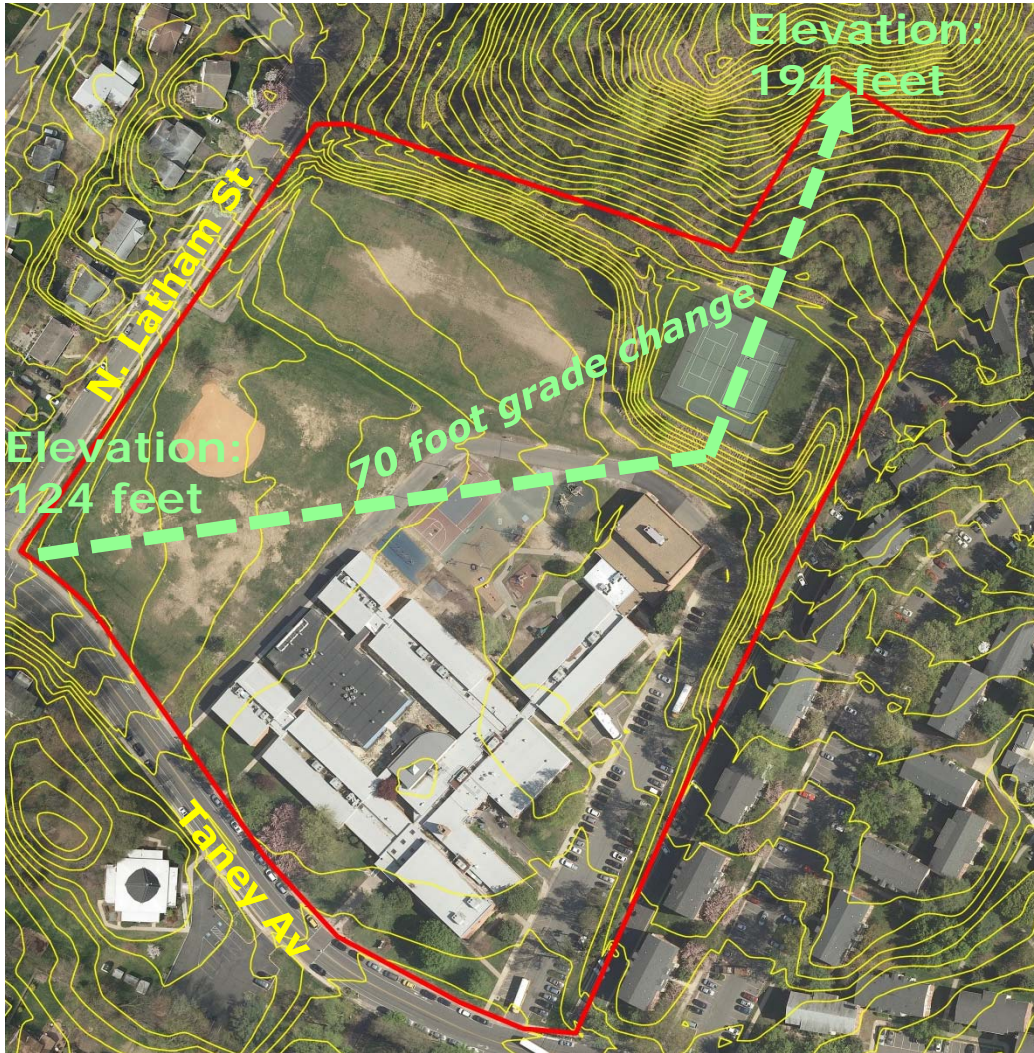
December 17, 2016

# Project Location





# Topographical Context





# Existing Conditions



View from Taney Av



View from Taney Av & N. Latham



View from N. Latham St





# Project Description



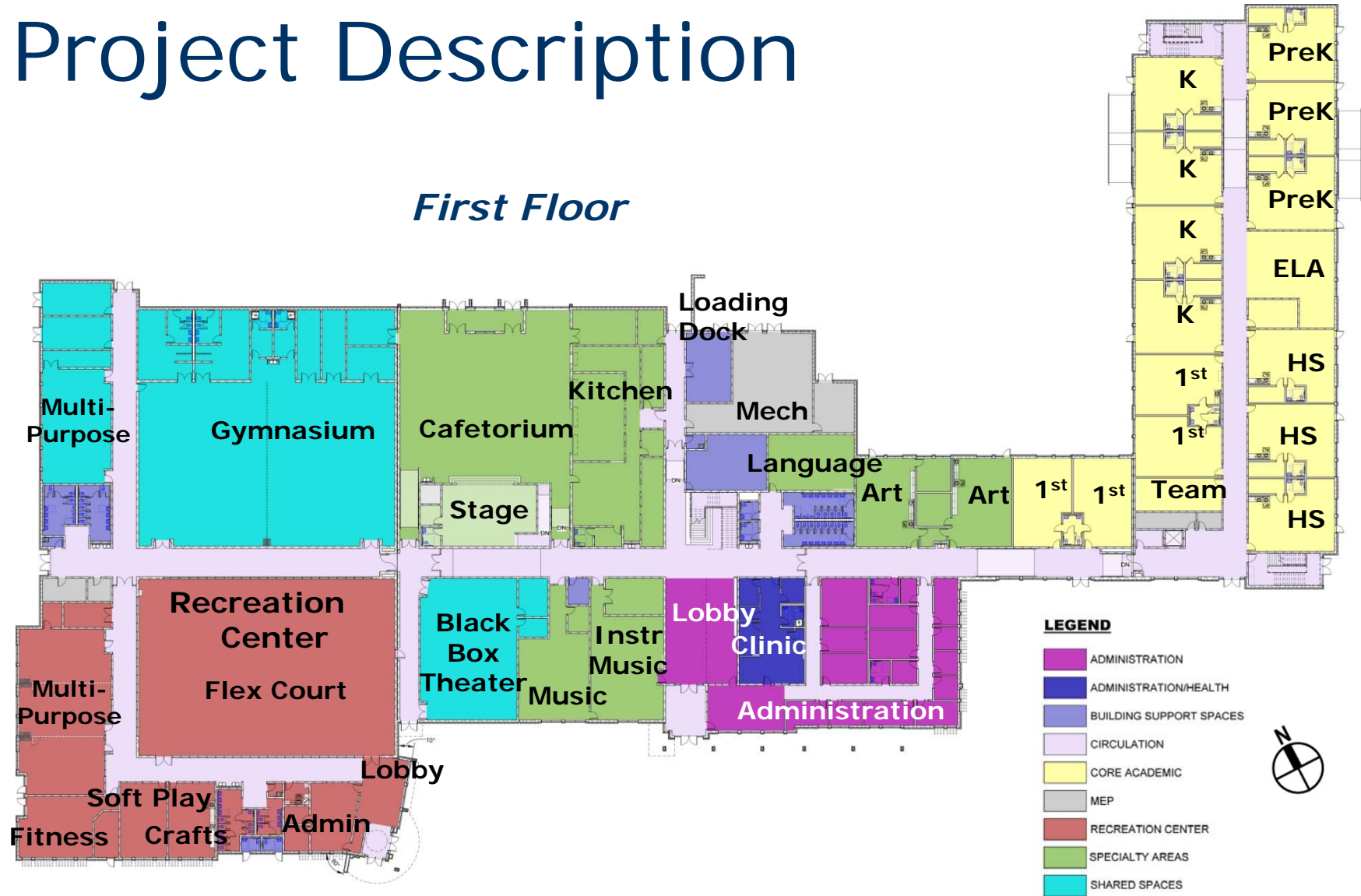
## Summary

- 155,000 sf facility
  - 136,700 sf school
  - 18,000 sf rec center
- 900 student capacity (grades Pre-K to 8)
- Neighborhood Rec Center
- Phased construction
  1. Construct new building
  2. Vacate old building
  3. Demolish old building
  4. Construct open space amenities



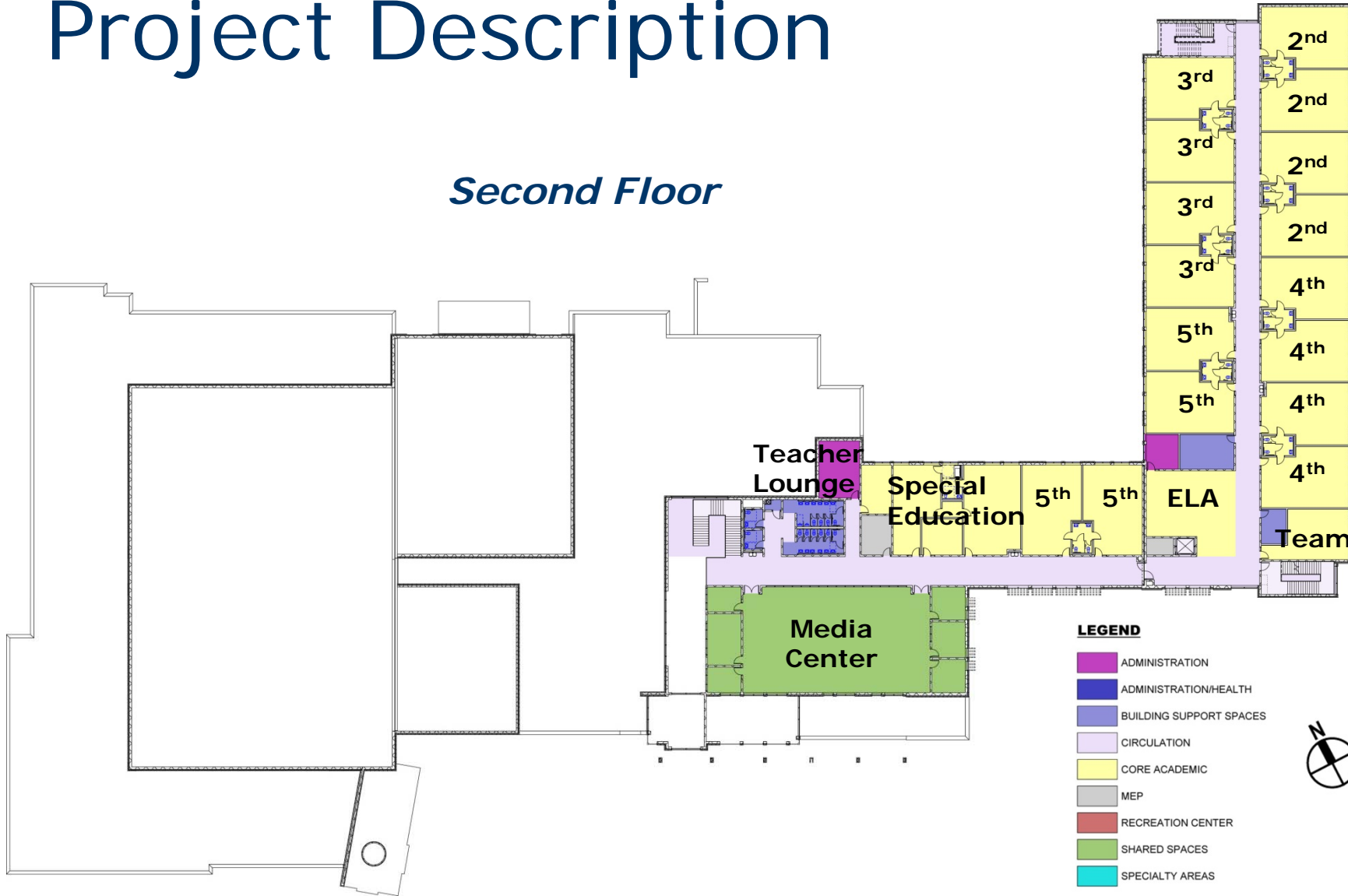
# Project Description

## First Floor



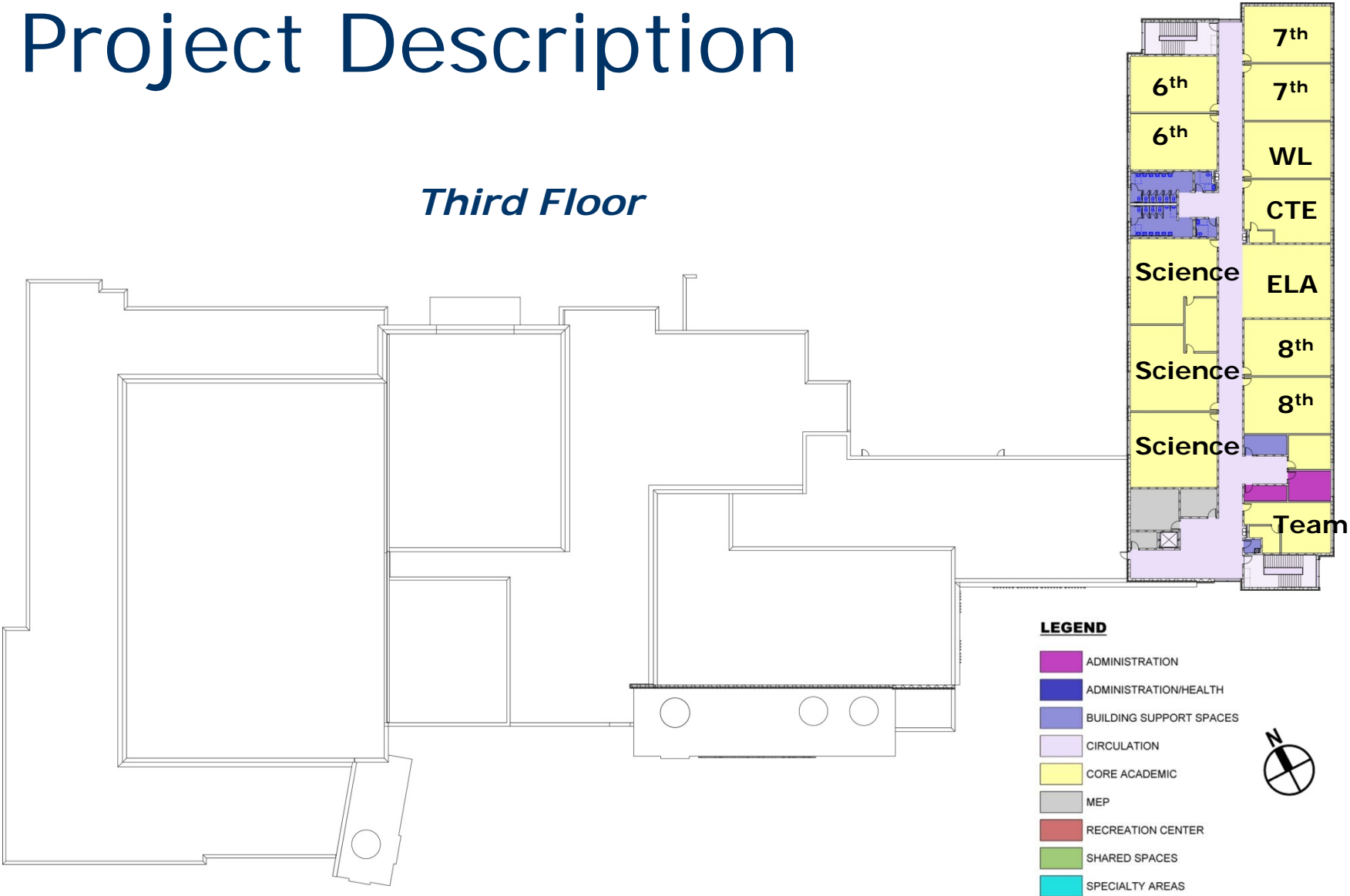
# Project Description

## Second Floor



# Project Description

## Third Floor





# Special Use Permits

- Increase in height for a school (7-2100)
- Indoor/Outdoor rec center in R-12 zone (3-203C)
- Exceeding required parking in R-12 zone (3-203E)
- More than 1 mechanical penthouse (6-403B-2a)
- Mechanical penthouse >15 feet (6-403B-2b)



# Building and Site Design





# Building and Site Design

Safety – separate entrances for buses and cars





# Building and Site Design

Safety – kiss-n-ride route deep into site away from road





# Building and Site Design

Safety – wide sidewalks and pedestrian connections





# Building and Site Design

Open Space – range of options for school and community





# Building and Site Design

Open Space – direct access from building, auto-free





# Building and Site Design

Architecture – tapered height, neighborhood scale





# Building and Site Design

Architecture – distinguishing school and rec center



# Parking

## Zoning Ordinance Requirement

Use	Ratio	Amount	Requirement
Elementary School/ Junior High	1 space per 25 students	650 students	26 spaces
Nursery School (Pre-K)	2 spaces per classroom	10 classrooms	20 spaces
Recreation Center	1 space per 200 sf	18,841 sf	95 spaces
<b>Total</b>			<b>141 spaces</b>

- Proposal provides for 155 spaces on site.
- Parking will be shared between school and rec center





# Community Outreach

Date	Meeting
December 9, 2015	Community Advisory Group Meeting + Community Meeting
January 13, 2016	Community Advisory Group Meeting
February 3, 2016	Community Advisory Group Meeting
February 10, 2016	Community Meeting
February 17, 2016	Community Advisory Group Meeting
March 2, 2016	Community Advisory Group Meeting
March 16, 2016	Community Meeting
April 6, 2016	Community Meeting
April 13, 2016	Community Advisory Group Meeting
April 27, 2016	Community Advisory Group Meeting
May 4, 2016	Community Meeting
June 15, 2016	Community Advisory Group Meeting
June 15, 2016	Park and Recreation Commission
July 7, 2016	Community Advisory Group Meeting
July 27, 2016	Playground Technical Advisory Taskforce
August 10, 2016	Community Advisory Group Meeting
September 13, 2016	Commission for the Arts
September 28, 2016	Community Advisory Group Meeting + Community Meeting
November 30, 2016	Community Advisory Group Meeting + Community Meeting



# Conclusion





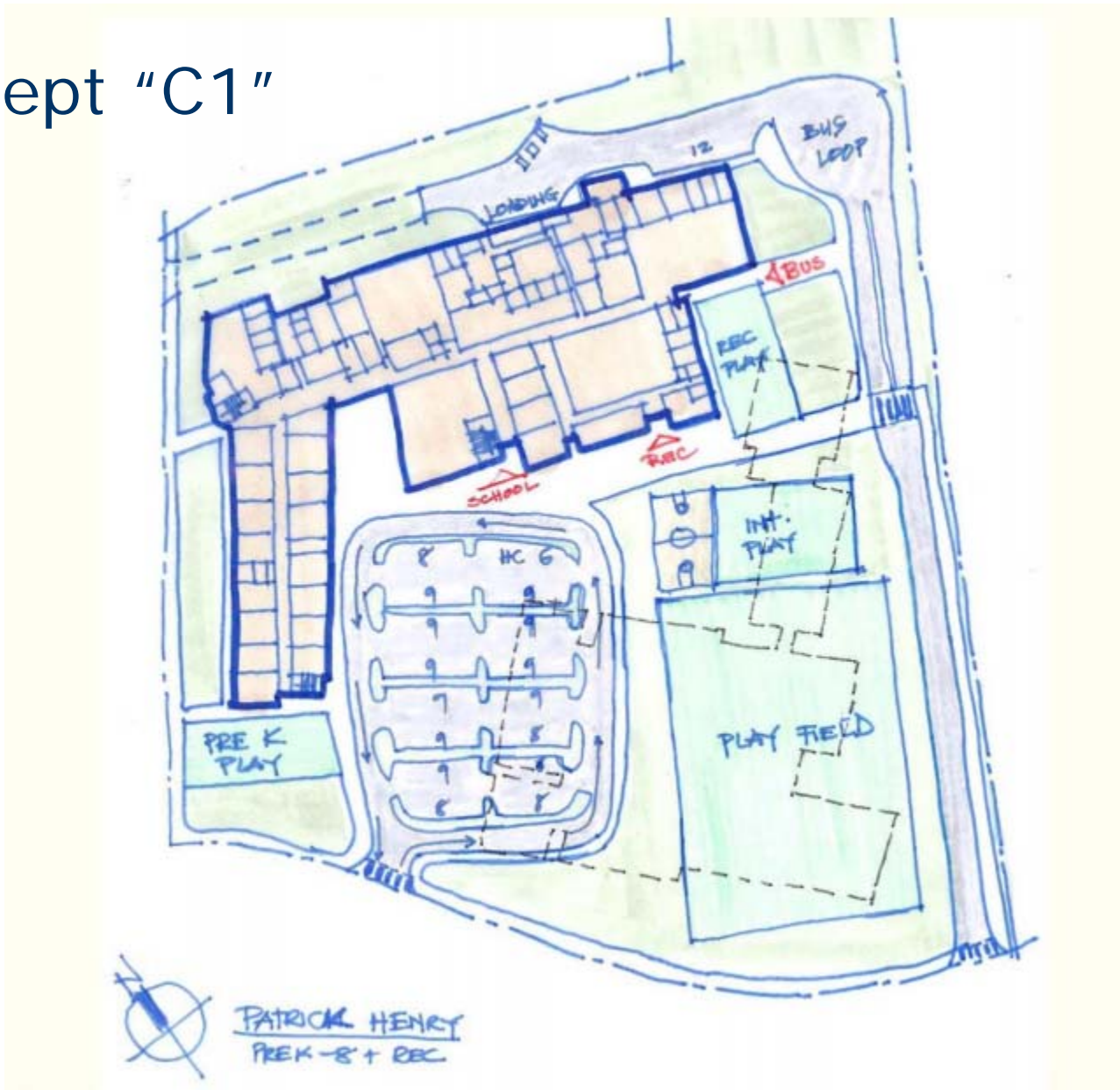


[Architecture Video \(fly-in\)](#)





# Concept "C1"



# Proposed Site Plan

