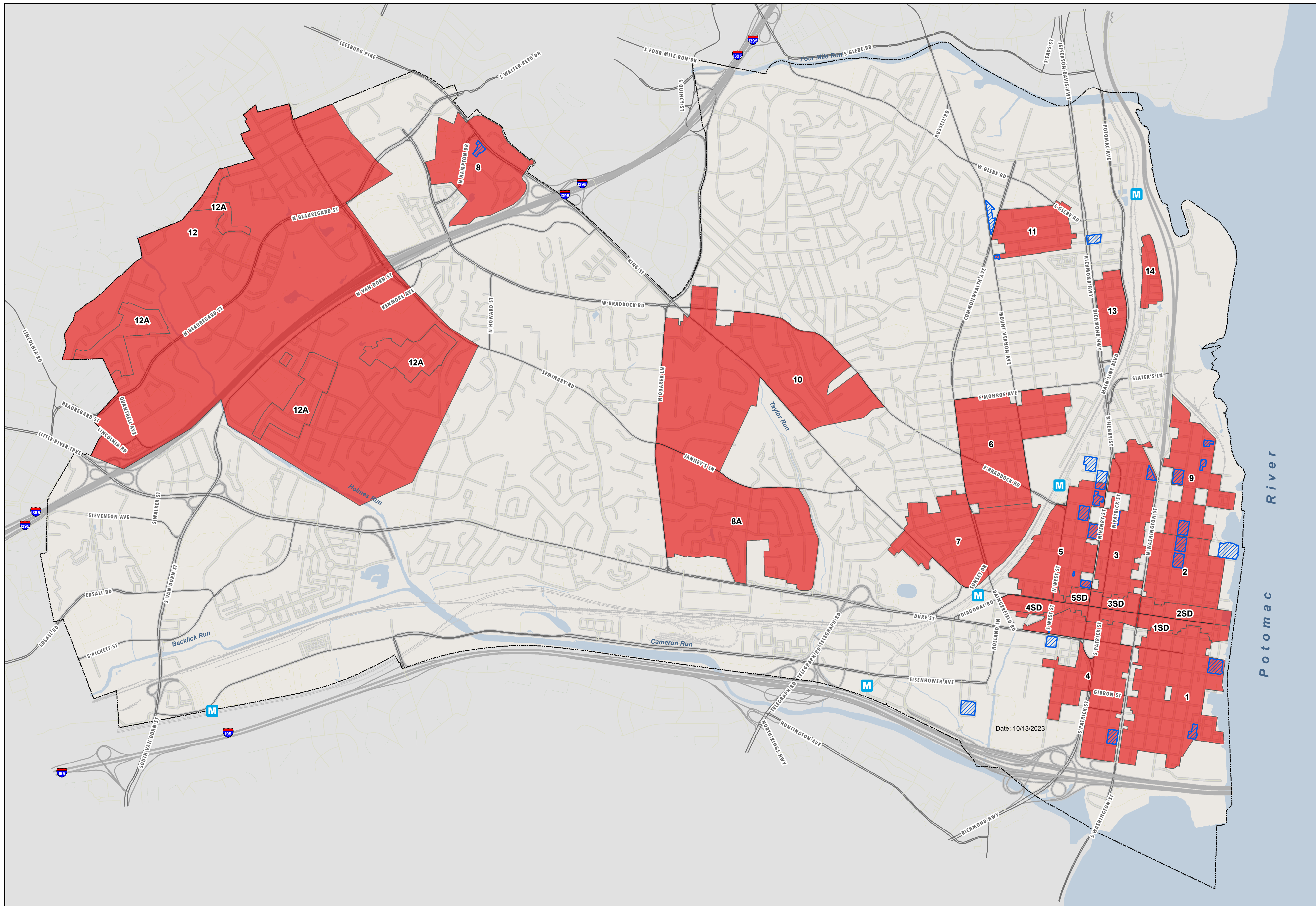







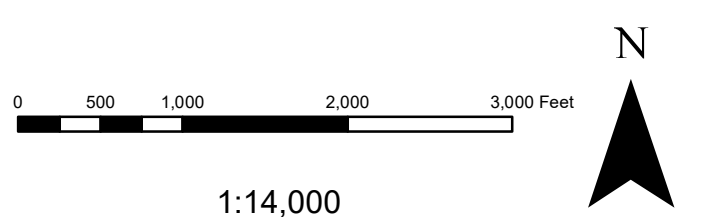


# Residential Parking Districts

Map Published Date: 10/13/2023



-  SUP Parking Conditions
-  Residential Parking Districts\*
-  Metro Station
-  **City Boundary**
-  Metro Tracks
-  Railroads
-  Water Bodies



RPA amendments following the 2004 approved map are included.

Mapping Standards:  
Coordinate System - NAD83 State Plane Virginia North  
Projection - Lambert Conformal Conic  
Map Units - Feet

This map was produced by the GIS Division of the  
ITS Department, City of Alexandria, Va

The maps provided hereunder are provided "as is" and the City expressly disclaims  
any warranty, express or implied, including warranties as to  
accuracy of the maps and merchantability and fitness for a particular purpose, and  
thereby expressly disclaims responsibility for all incidental, consequential or special  
damages arising out of or in connection with the use or  
performance of the maps.

Pursuant to Section 54-1402 of the Code of Virginia, any  
determination of topography or contours, or any depiction of  
physical improvements, proposed or existing, on this map is for  
general information only and shall not be used for the design,  
modification or construction of improvements to real property  
or for based data determination.

Map Updated:  
8-4-2023

