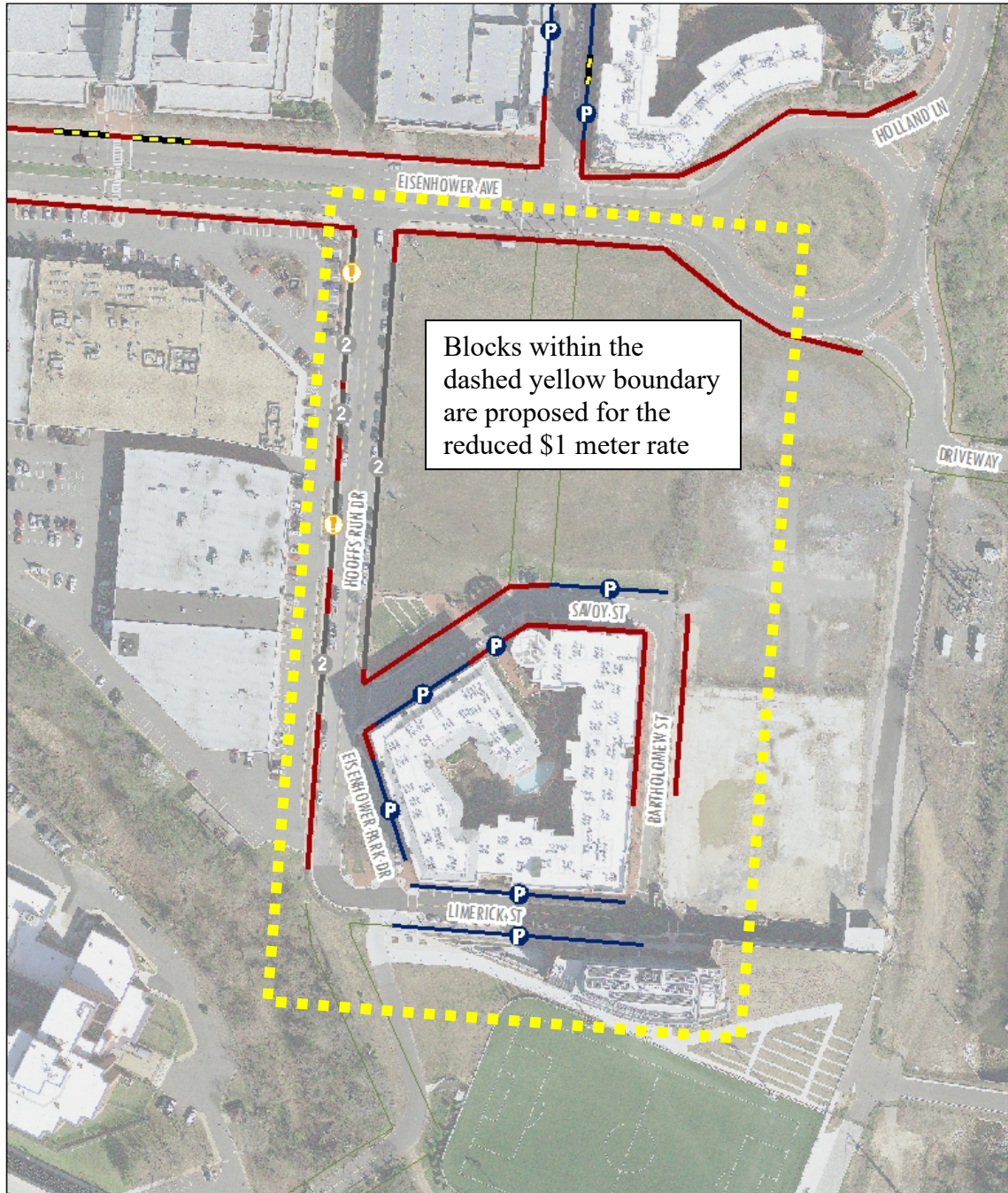


ATTACHMENT 2: LOCATION OF PROPOSED AREA FOR \$1 PER HOUR METER RATE

Hooffs Run Drive, Limerick Street, Eisenhower Park Drive, Bartholomew Street, Savoy Street, and the 800 block of John Carlyle Street



- | | |
|--------------|-------------------------|
| Loading Zone | Special Restriction |
| No Parking | 2 Hr Restricted Parking |
| Pay to Park | |

0 100 200 400 Feet

