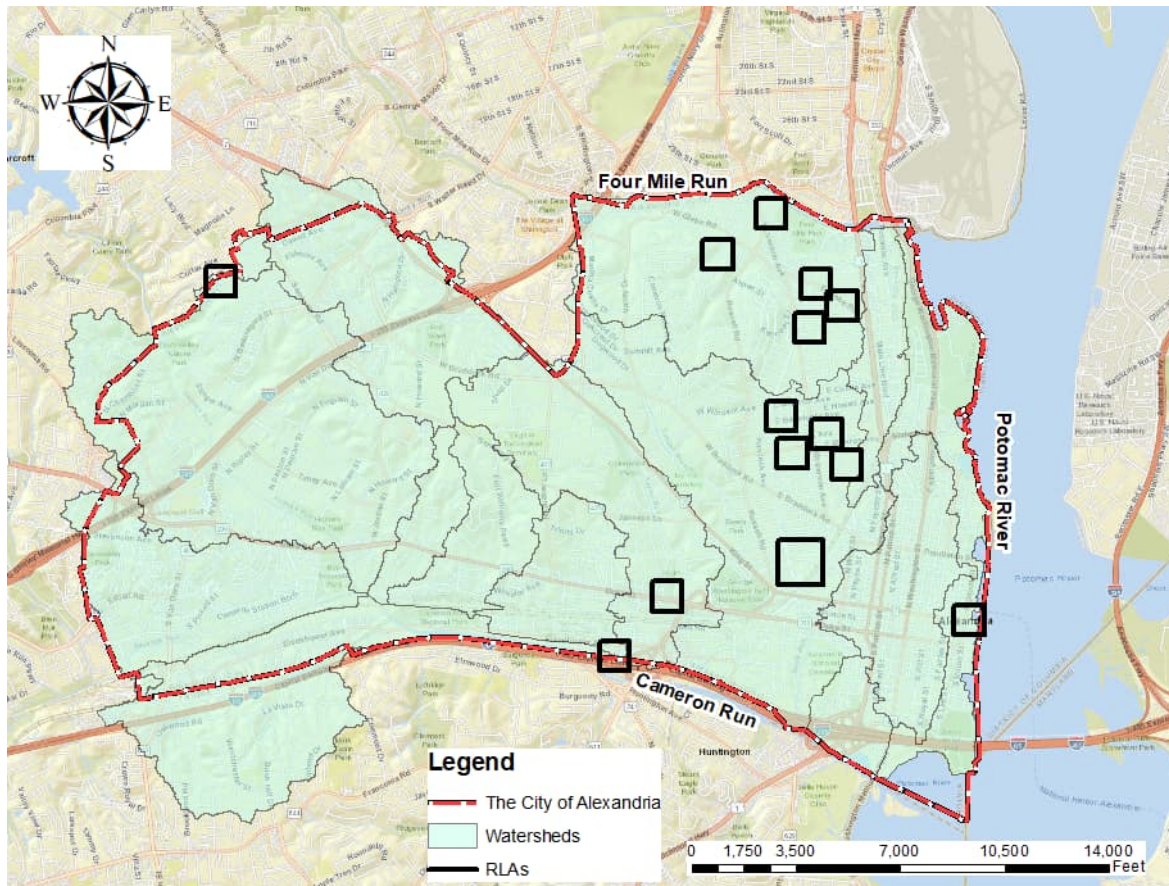


## 2 City of Alexandria

The City is an independent city in the Commonwealth of Virginia. According to the 2020 U.S. Census, its population stands at 159,467 residents. Situated on the western bank of the Potomac River, the City is approximately 6 miles south of Washington, DC. Notably, there are 15 local watersheds, as seen in Figure 1, that directly discharge into Four Mile Run, Cameron Run, or the Potomac River, which is ultimately part of the Chesapeake Bay watershed.



Source: ESRI

**Figure 1: The City's Watershed Map**

The City has participated in FEMA's NFIP since May 8, 1970 and has participated in FEMA's CRS program since October 1, 1992 which is identified by community ID (CID) 515519. As part of the CRS, the repetitive loss data must be maintained and re-certified annually to ensure continued participation. Since many NFIP losses result from repetitively flooded properties, addressing these properties is a priority. Specific community responsibilities depend on the severity of the repetitive loss problems and are grouped into three types:

- **Category A:** A community that has no Repetitive Loss properties or whose Repetitive Loss properties all have been mitigated. These communities have no special requirements except to submit information to update their Repetitive Loss list as needed.