



City of Alexandria

Braddock Road Corridor Improvements Appeal

May 16, 2026





Summary

Request:

- Consider an appeal of the Traffic & Parking Board's recommendation on the Braddock Road Corridor Improvements Project.

Recommended Council Action:

- Concur with the Traffic & Parking Board Decision

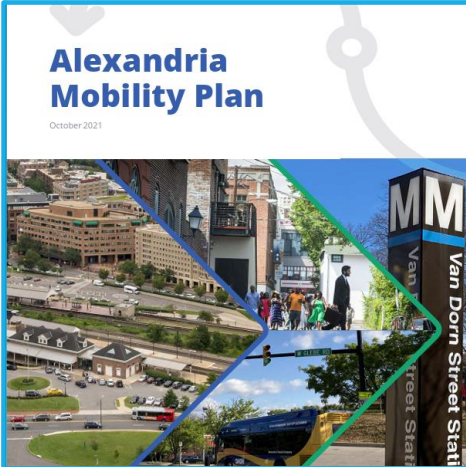
Key Elements of the Discussion

- Current street design does not adequately support people walking, biking, scooting, and accessing transit.
- Proposed changes include removal of on-street parking, adjustments to intersection design, new bike lanes, and crossing improvements.



Why this project?

This project aligns with plans and policies previously adopted by City Council.



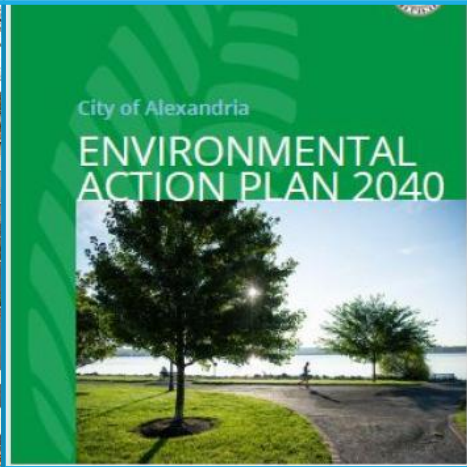
Alexandria Mobility Plan



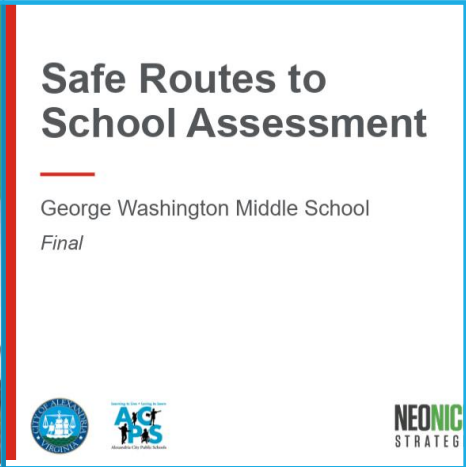
Vision Zero & Safe Systems



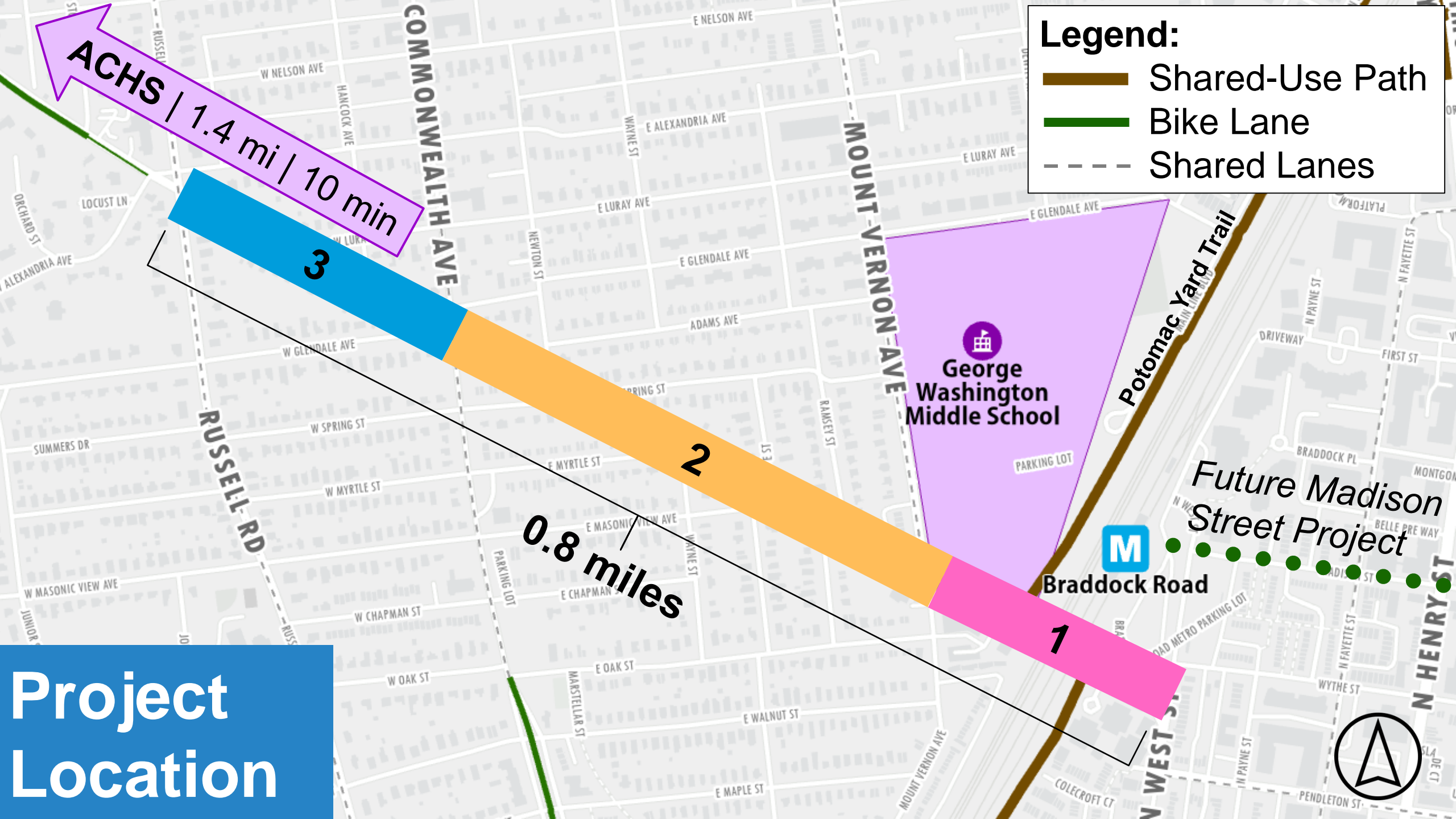
Complete Streets Policy






Environmental Action Plan



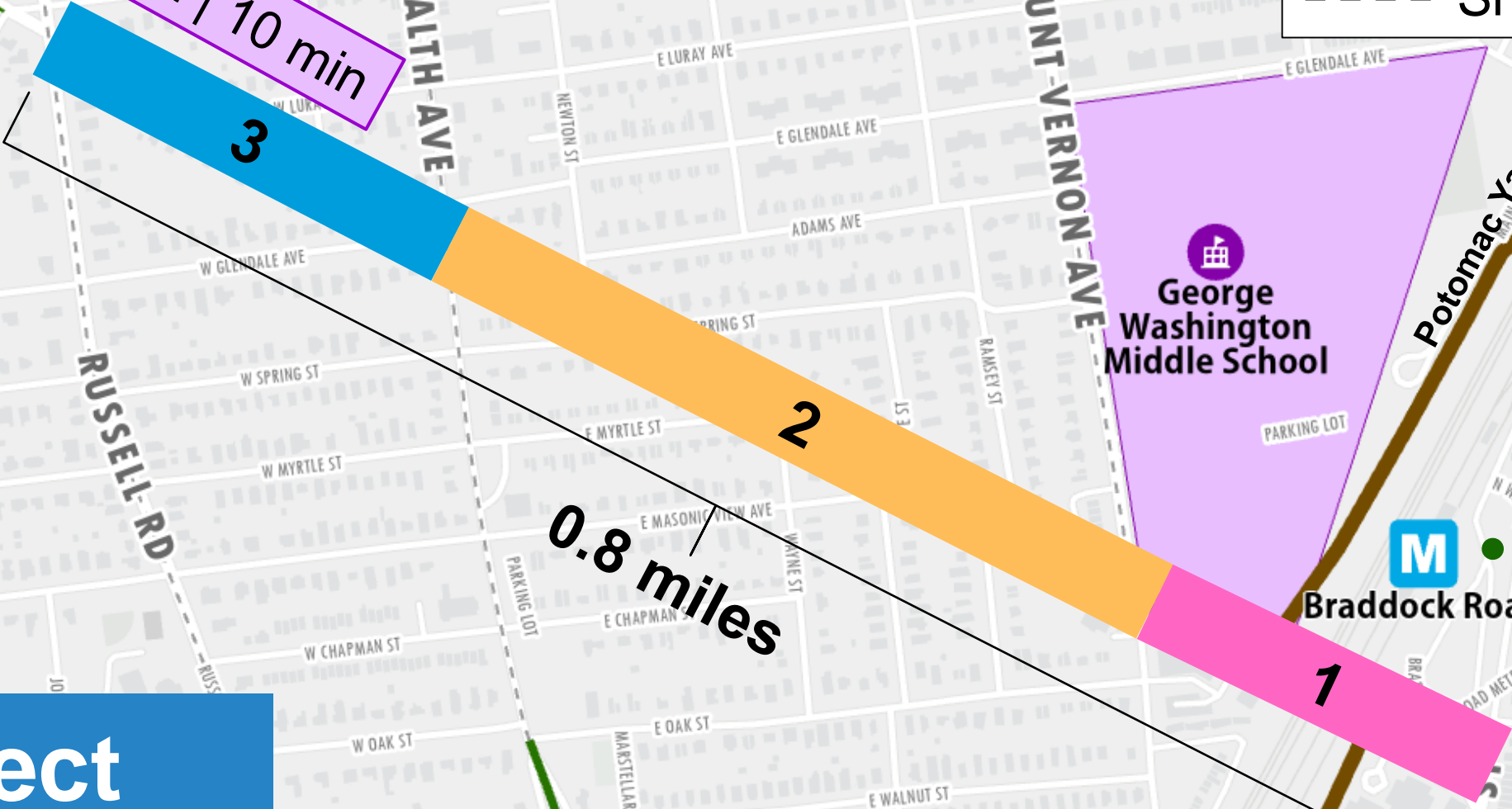
GW Middle Safe Routes to School Study



Legend:

-  Shared-Use Path
-  Bike Lane
-  Shared Lanes

ACHS | 1.4 mi | 10 min



0.8 miles

Project Location

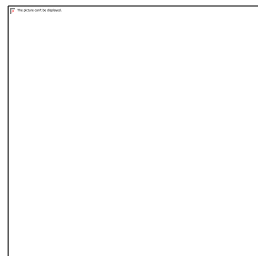




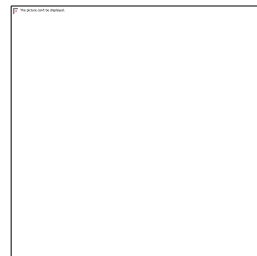
Complete Streets Considerations



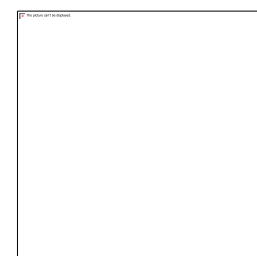
- **Easier transitions** at intersections
- **Fewer conflicts** with people
- **Minimal change** in delay
- **No parking** on Braddock



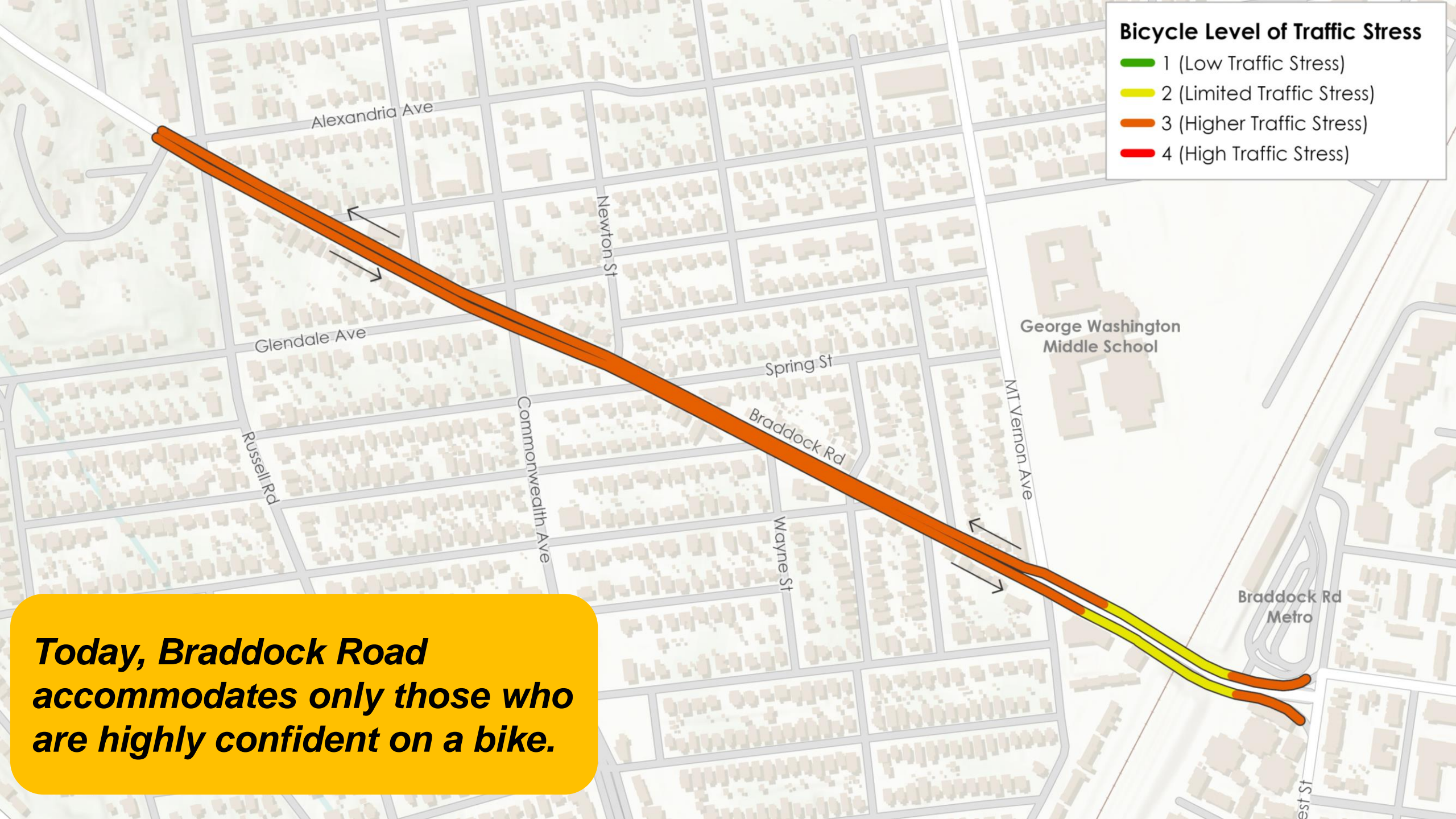
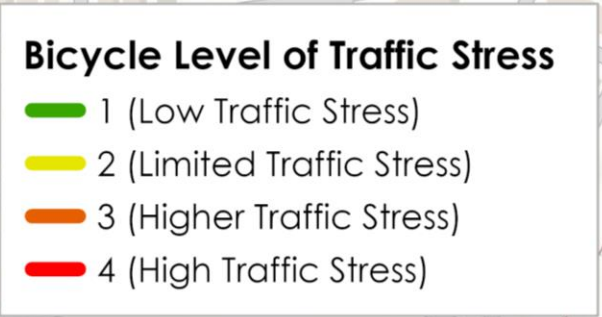
- Slower speeds make walking **safer**
- Sidewalk **buffer**
- Crossing distance **reduced by >50%**



- Slower speeds **reduce risk** of severe crashes
- **Dedicated place** to bike or scoot



- **Safer crossings** to bus stops and Metro
- **Accessible** bus stops
- **More options** to access transit



Today, Braddock Road accommodates only those who are highly confident on a bike.

Alexandria Ave

Glendale Ave

Russell Rd

Commonwealth Ave

Newton St

Spring St

Braddock Rd

Wayne St

MT Vernon Ave

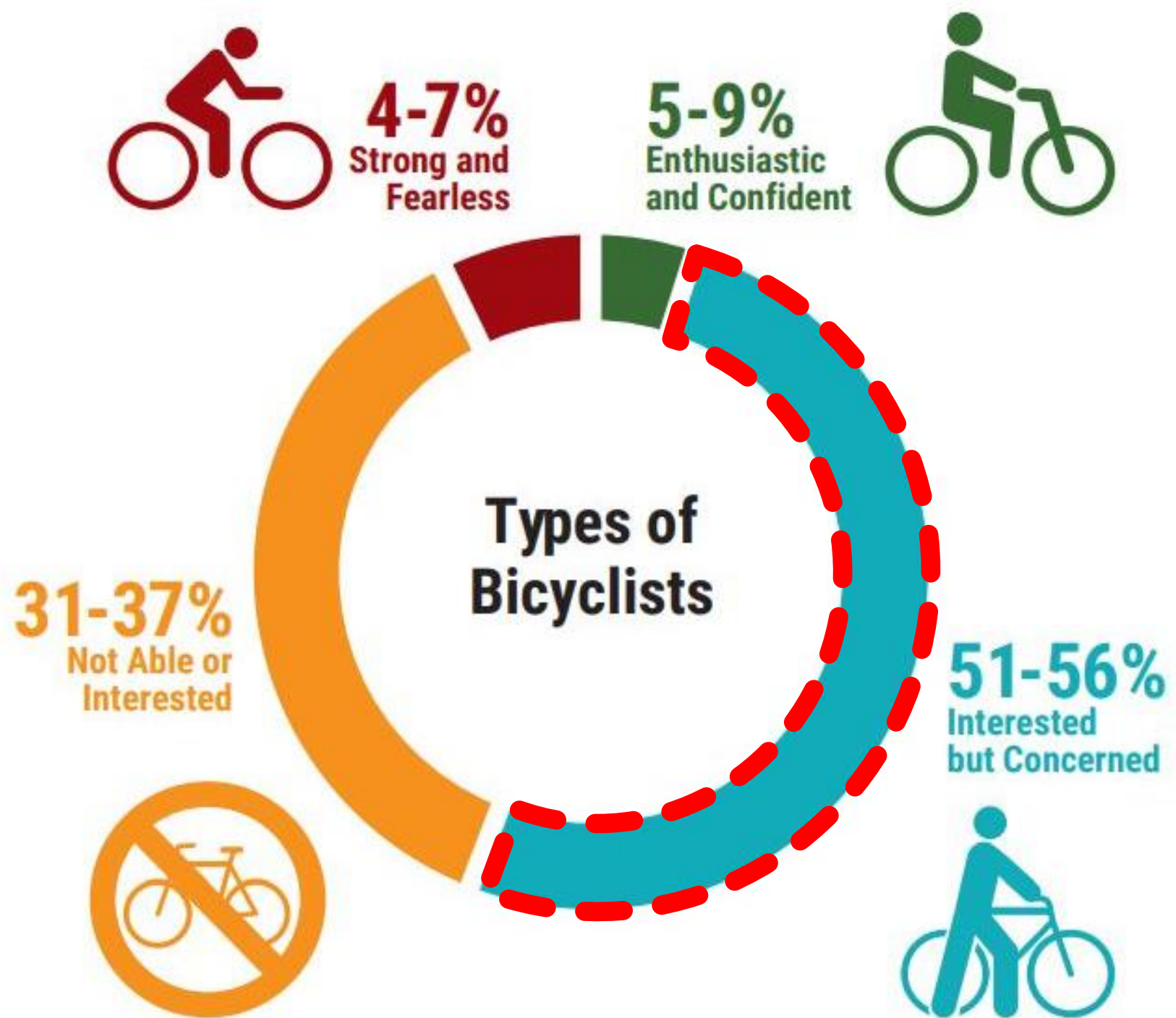
George Washington Middle School

Braddock Rd Metro

West St

Designing for All Users

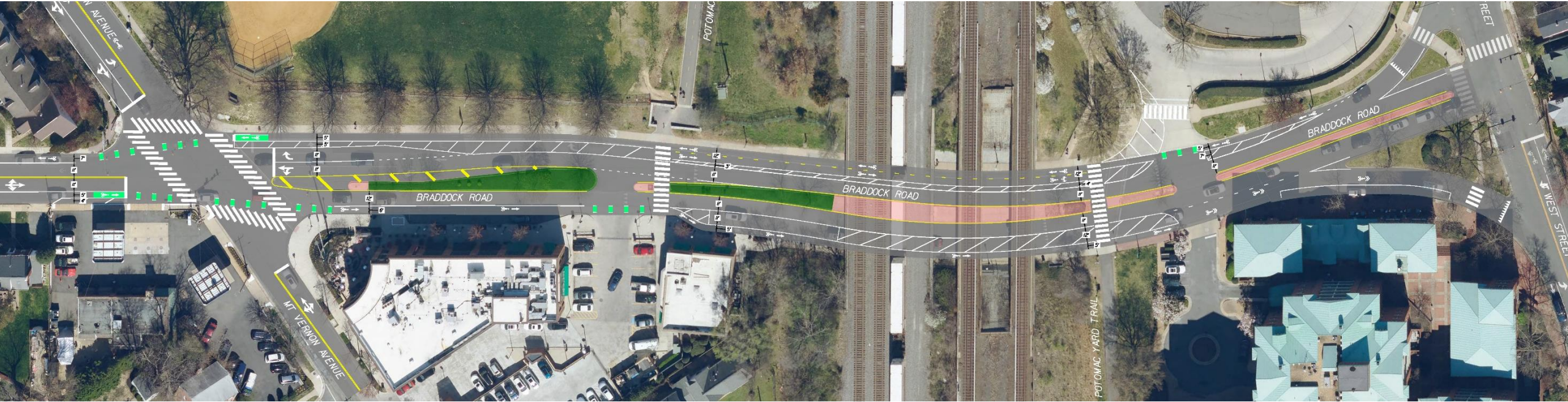
69% would be more likely to bike for transportation if they felt safe from traffic



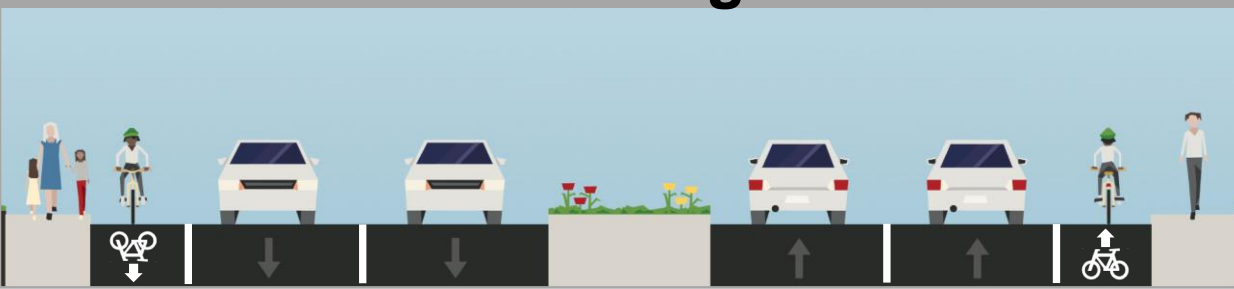


Segment 1

West Street to Mount Vernon Avenue



Existing



Recommendation



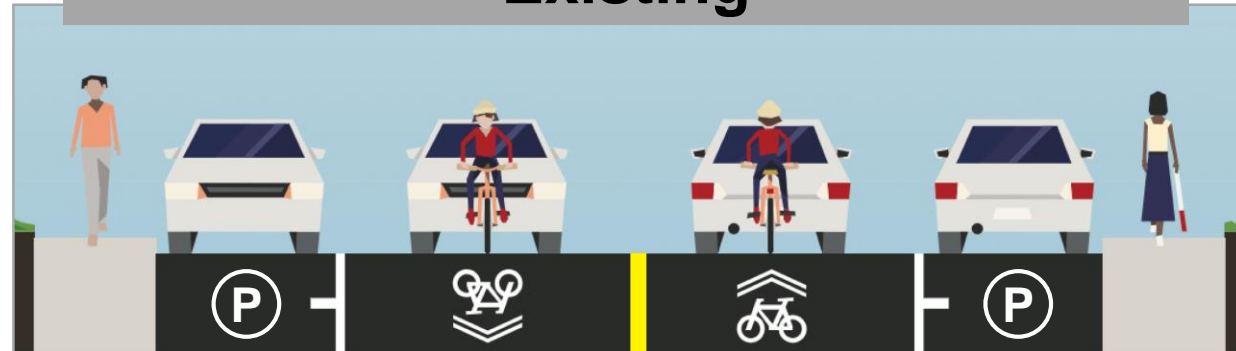


Segment 2

Mount Vernon Avenue to Commonwealth Avenue



Existing



Recommendation



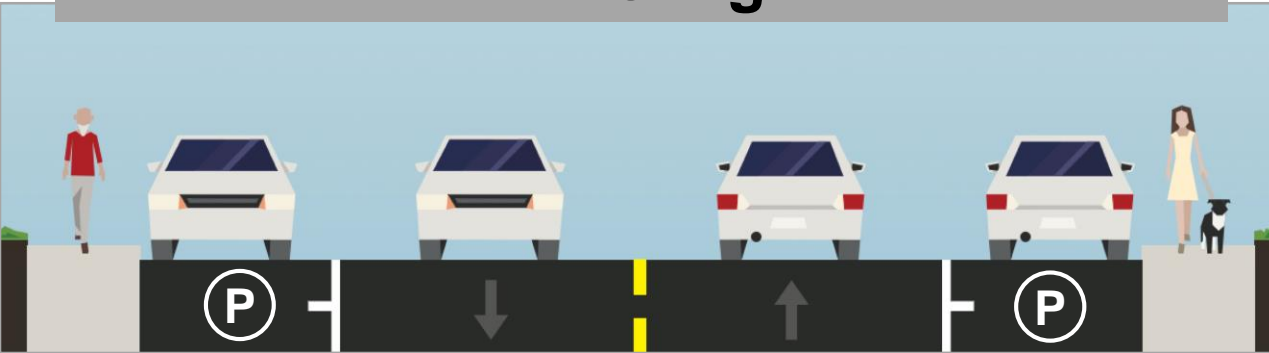


Segment 3

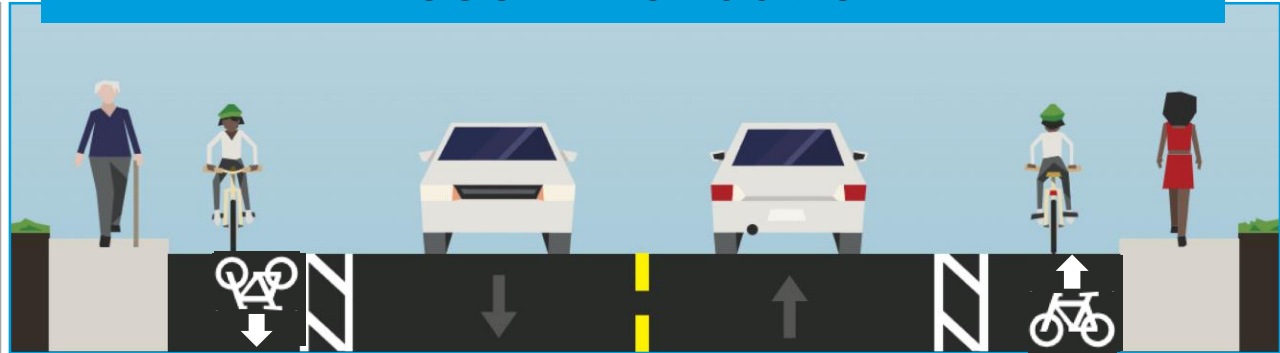
Commonwealth Avenue to Russell Road



Existing



Recommendation





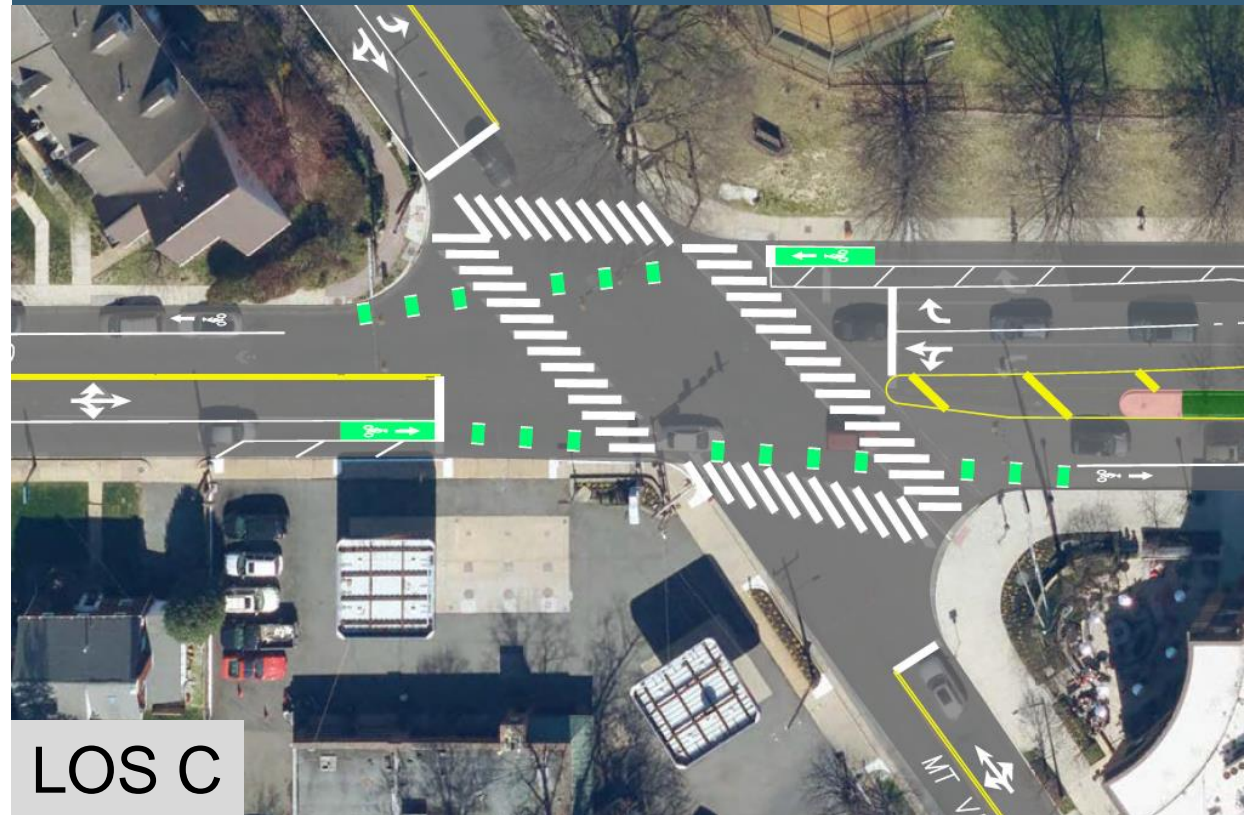
Mount Vernon Avenue Intersection

Existing



LOS C

Recommendation

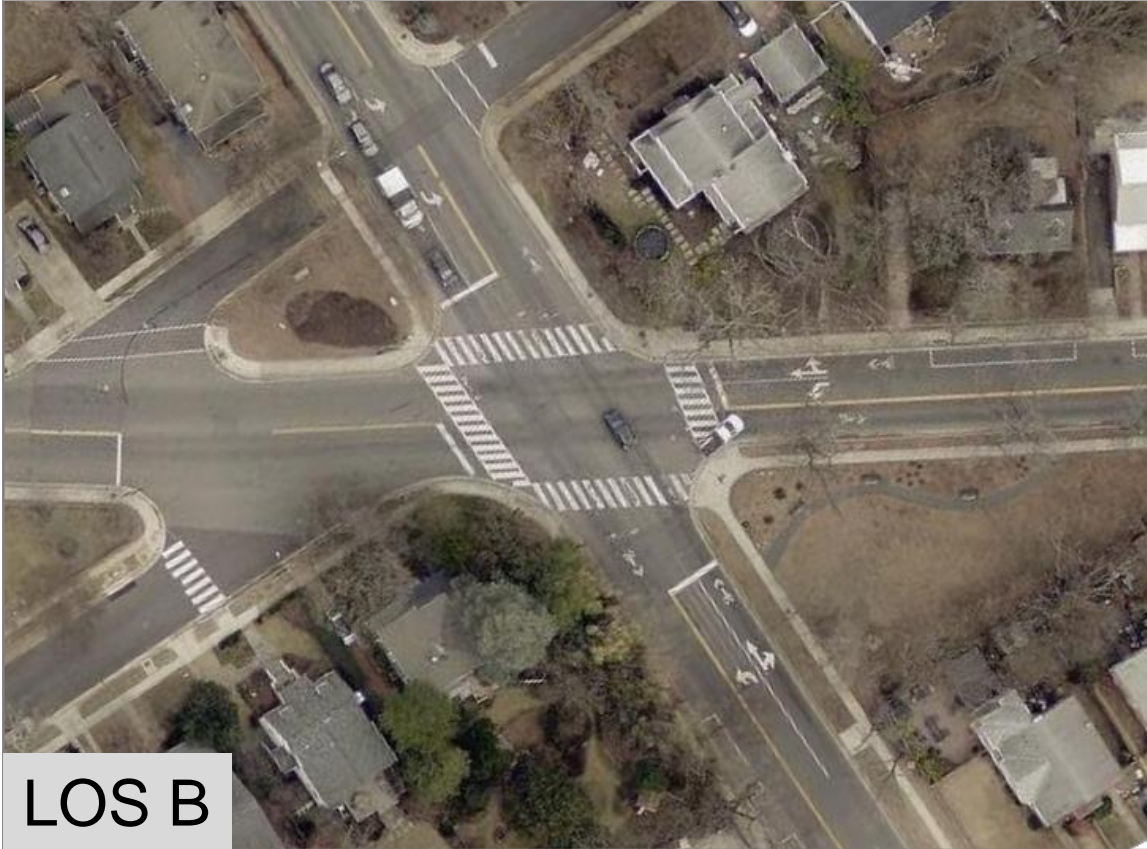


LOS C

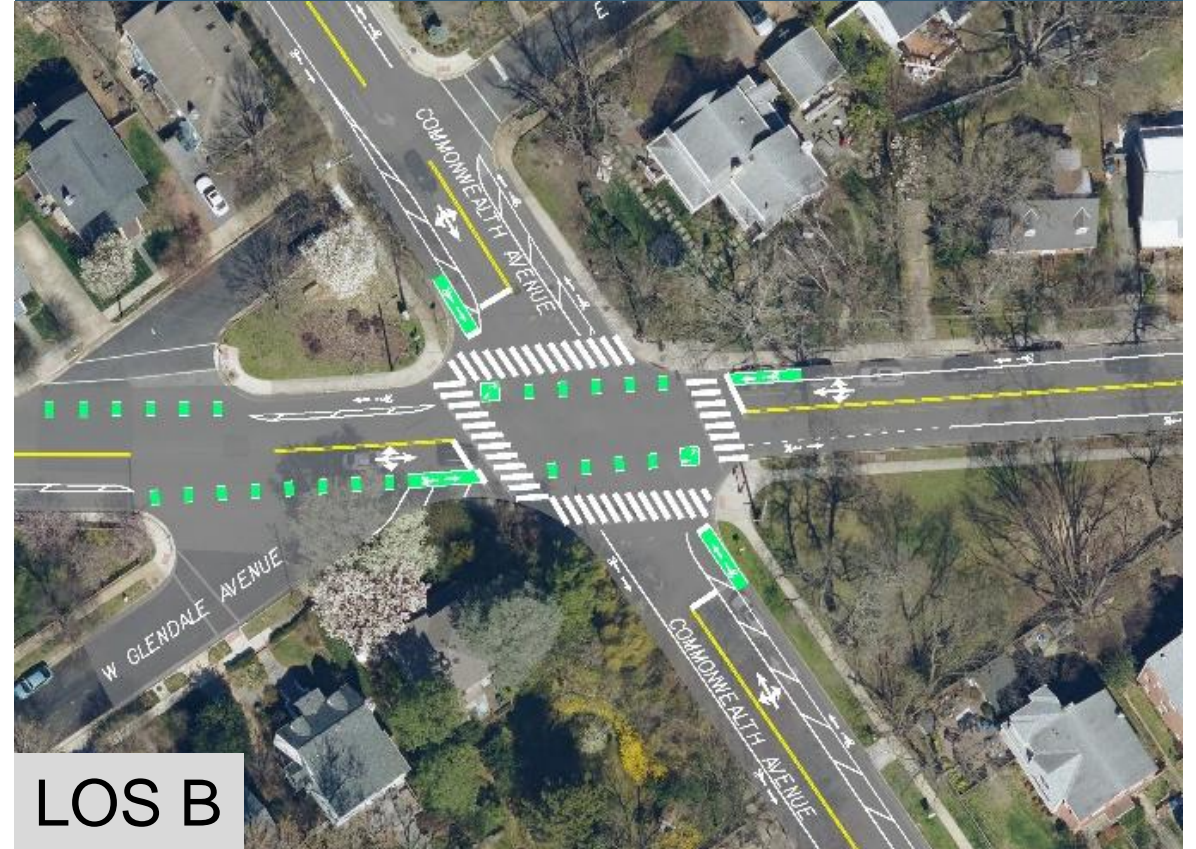


Commonwealth Avenue Intersection

Existing



Recommendation





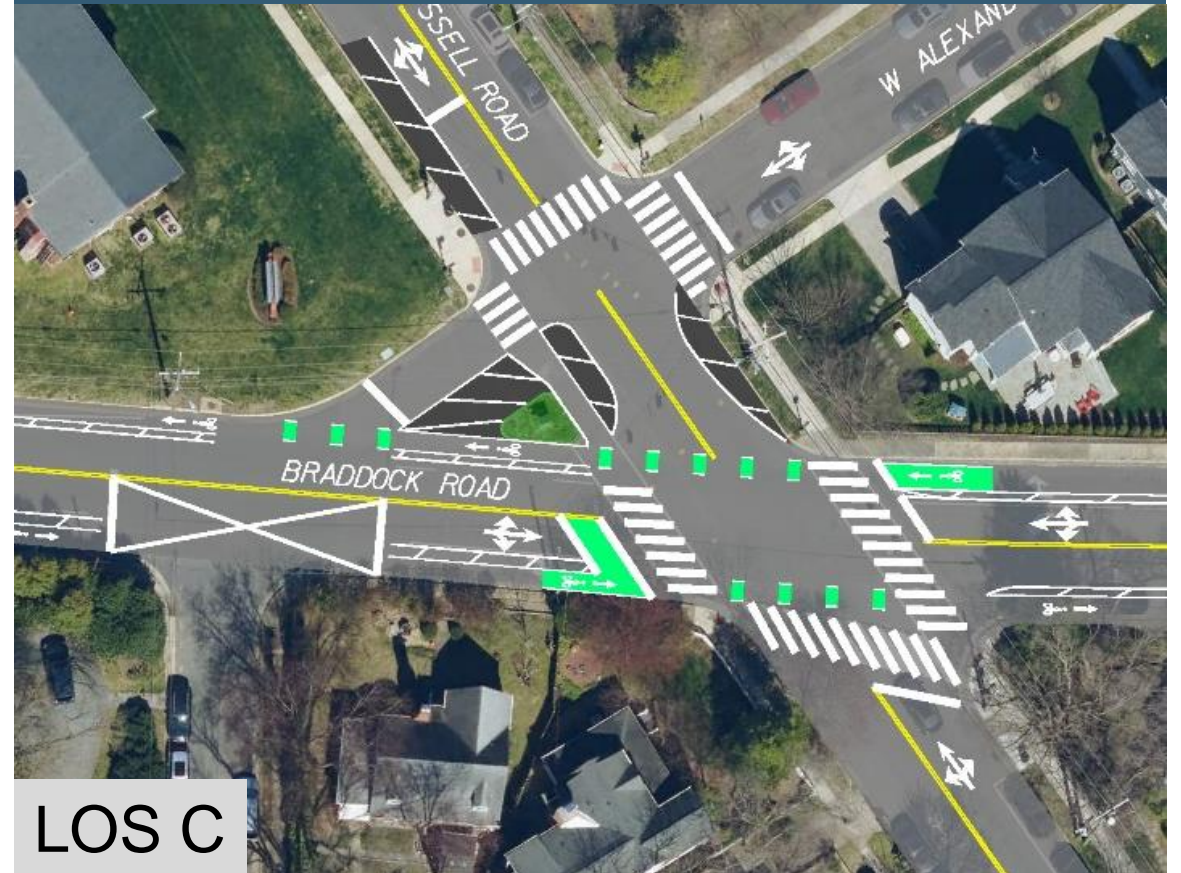
Russell Road Intersection

Existing



LOS C

Recommendation



LOS C



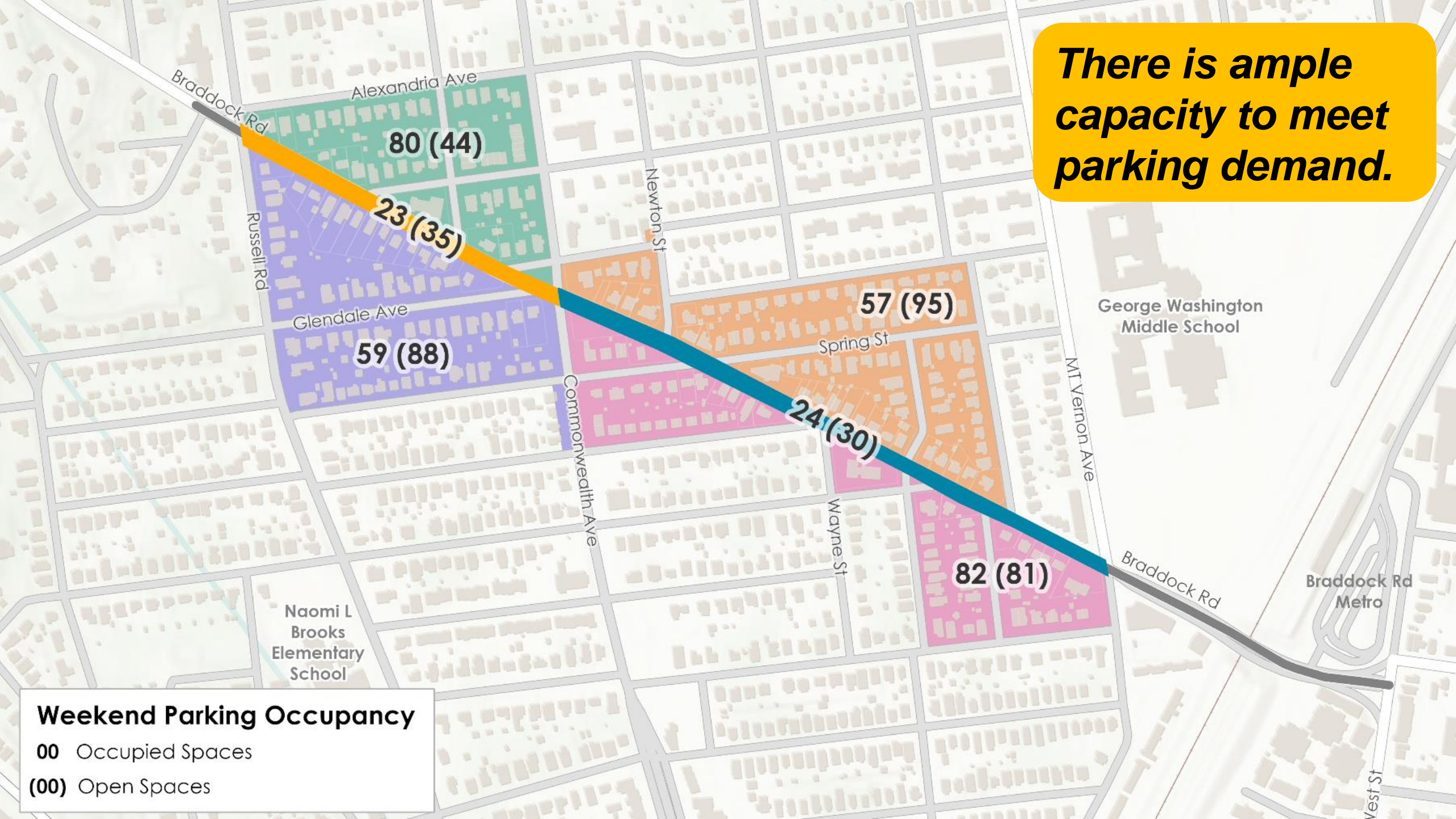
Appellant Concerns

Parking
impacts

ADA
access

Traffic
operations

There is ample capacity to meet parking demand.

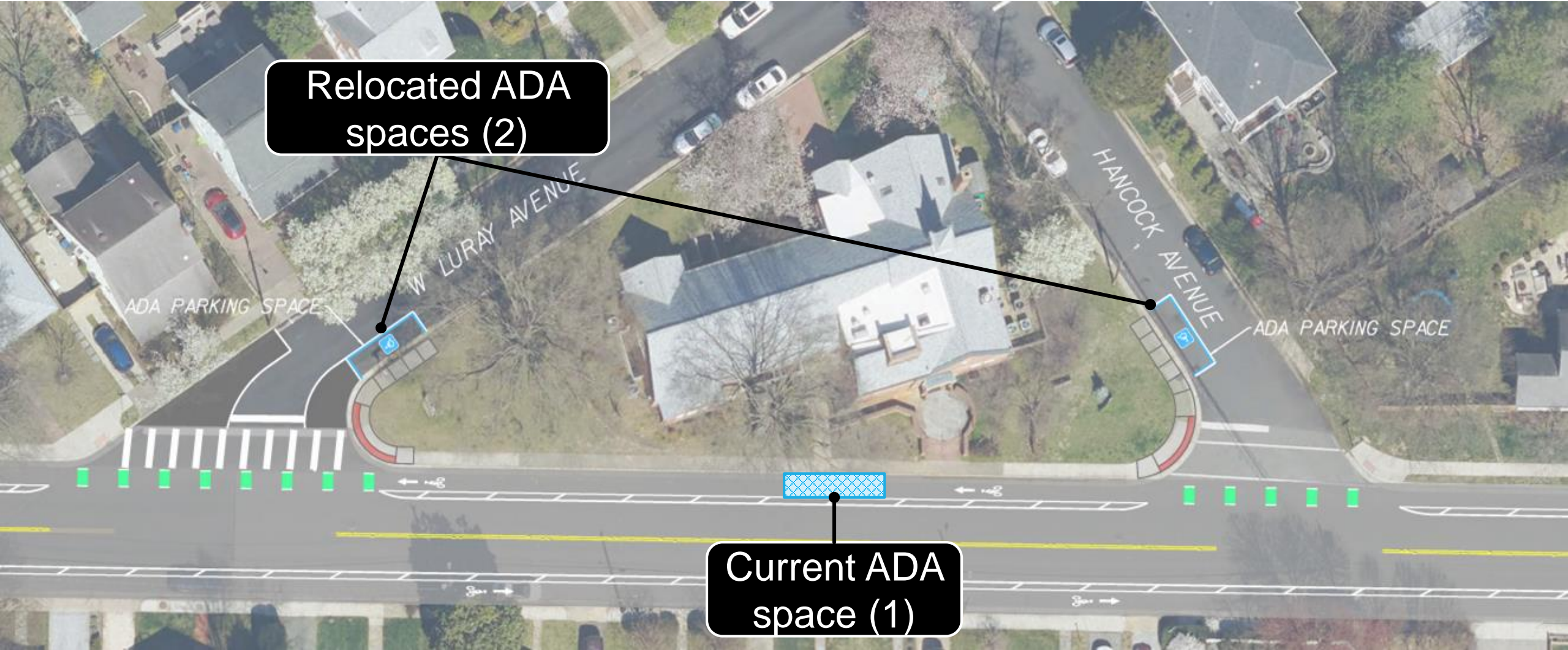


Weekend Parking Occupancy
00 Occupied Spaces
(00) Open Spaces



ADA Access

The City is continuing to provide ADA access by relocating and doubling the number of ADA spaces.



Relocated ADA spaces (2)

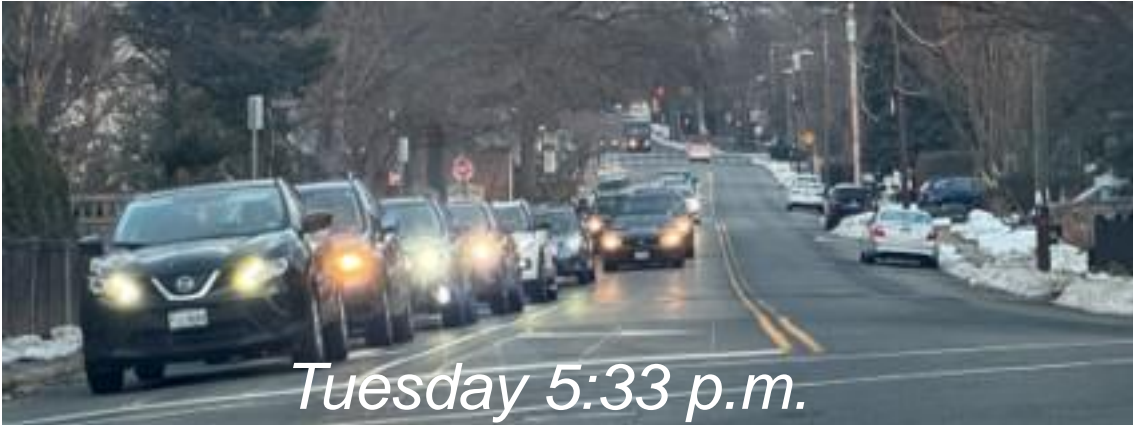
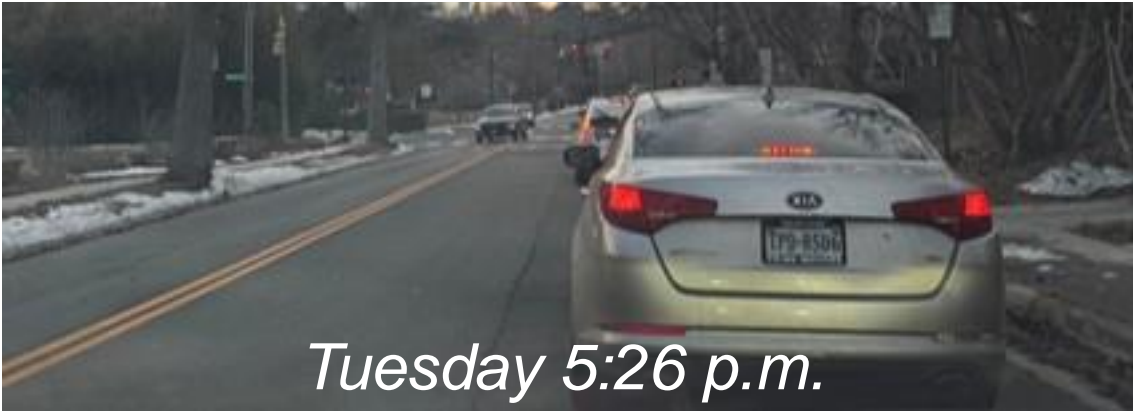
Current ADA space (1)



Traffic Operations

Overall traffic operations will remain virtually unchanged with the recommended design.

Intersection	Existing	Recommended
Mount Vernon Avenue	30 sec C	28 sec C
Commonwealth Avenue	17 sec B	16 sec B
Russell Road	33 sec C	32 sec C





Community Feedback



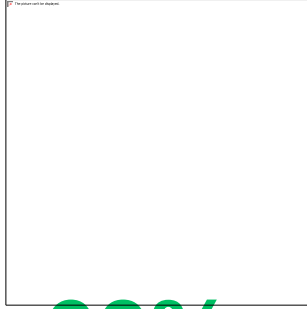
95%

feel positive or neutral about providing **safe pedestrian crossings**



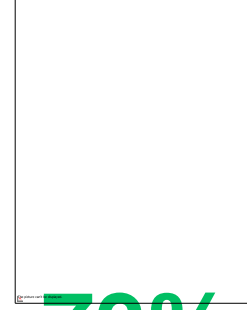
75%

feel positive or neutral about providing safe, comfortable **places to bike or scoot**



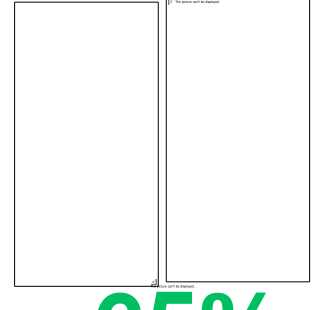
60%+

feel positive or neutral about **parking removal** on both sides of Braddock



73%

feel positive or neutral about **two-way bike lane** next to Metro Station



65%

feel positive or neutral about **removal of travel lane** in each direction



Recommendation

That the City Council **uphold** the Traffic & Parking Board's February 23 recommendation for Braddock Road